



**Australian  
Bureau of  
Statistics**

**September 1993**

**LABOUR FORCE STATUS AND  
OTHER CHARACTERISTICS OF  
MIGRANTS  
AUSTRALIA**

**Catalogue No. 6250.0**



EMBARGOED UNTIL 11.30 A.M. 5 MAY 1994

**LABOUR FORCE STATUS AND OTHER CHARACTERISTICS  
OF MIGRANTS, AUSTRALIA  
SEPTEMBER 1993**

**IAN CASTLES**  
Australian Statistician

© Commonwealth of Australia 1994

Printed by ALAN LAW, Commonwealth Government Printer, Canberra

## CONTENTS

<i>Table</i>	<i>Page</i>
.. Summary of Findings	1
1 Civilian population aged 15 and over, March 1987, September 1990 and September 1993	5
<b>Migrants who arrived in Australia after 1970 aged 18 and over —</b>	
2 Migration category, labour force status and sex	6
3 Summary of characteristics, whether had a job just before migration and sex	7
4 Birthplace, labour force status and sex	8
5 Main source of income, age at September 1993 and sex	9
6 Migration category, main source of income at September 1993 and sex	10
7 Educational attainment on arrival, labour force status and sex	11
8 Country of last residence, labour force status and sex	12
9 Occupation at September 1993 and occupation just before migration	13
<b>Migrants who arrived in Australia after 1970 aged 18 and over with post-school qualifications —</b>	
10 Level of post-school qualification on arrival, field of qualification obtained before migration and country in which qualification was obtained before migration	14
11 Field of qualification obtained before migration and whether qualification recognised in Australia	14
<b>Migrants who arrived in Australia after 1970 aged 18 and over who were born in other than main English speaking countries —</b>	
12 Birthplace, English fluency and sex	15
<b>All populations —</b>	
13 State and Territory of usual residence	16
.. Explanatory Notes	17
.. Technical Notes	19
.. Glossary	21
.. Special data services —	
Data items and how to order special tables from this survey	23

---

**INQUIRIES**      • *for further information about statistics in this publication and the availability of related unpublished statistics, contact Mr Michael Jones on Canberra (06) 252 6503 or Labour Force Inquiries in your ABS State office (see page 27 for contact numbers).*  
 • *for information about other ABS statistics and services please refer to the last page of this publication.*

---

**ADDITIONAL DATA ON REQUEST**      The ABS offers a range of unpublished data from this survey upon request. Instructions on how to order unpublished data and an order form can be found on pages 28 and 29.

---



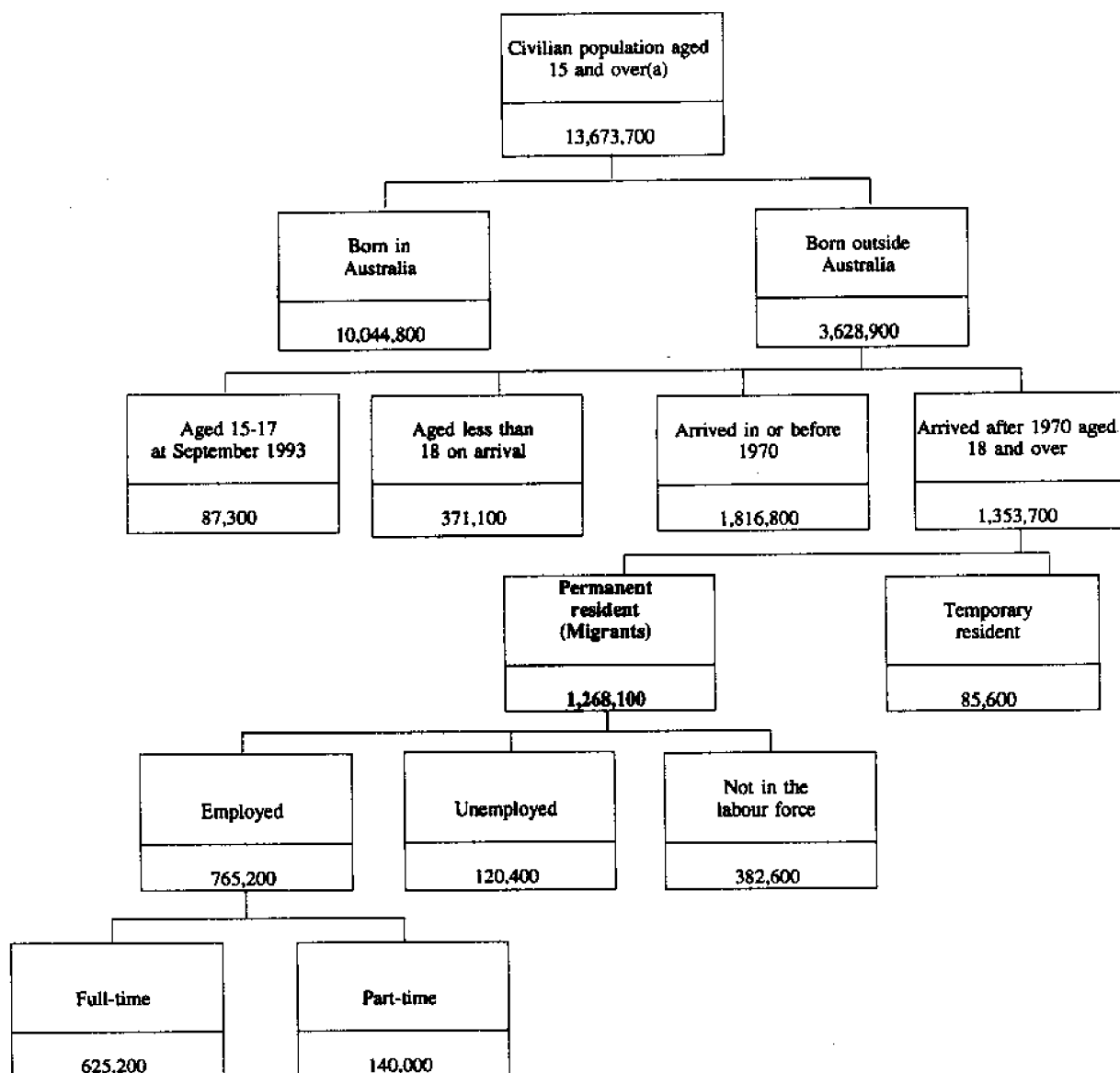
## SUMMARY OF FINDINGS

### Overview

In September 1993 the civilian population aged 15 and over was 13,673,700 persons, 27 per cent of whom were born outside Australia. The focus of this survey is that group of the migrant population who arrived after 1970 aged 18 and over on arrival and had obtained permanent residency status. In this summary, this group is referred to simply as 'Migrants'.

There were 1,268,100 such migrants at September 1993, representing 9 per cent of the civilian population aged 15 and over. This proportion was the same in September 1990 (the last time this survey was conducted).

**DIAGRAM 1. CIVILIAN POPULATION AGED 15 AND OVER: LABOUR FORCE STATUS OF MIGRANTS WHO ARRIVED IN AUSTRALIA AFTER 1970 AGED 18 AND OVER, SEPTEMBER 1993**



(a) Excludes institutionalised persons and boarding school pupils.

Source: Tables 1 and 2

## Migrants

### Migration category

Persons migrating from New Zealand are accorded a separate status. Some 13 per cent (166,600 persons) of migrants were in this category, a similar proportion to that of the September 1990 survey. Other migration categories focus on whether the migrant was a principal applicant (or partner) and whether sponsored, unsponsored, or a refugee.

In September 1993 there were 696,000 (55%) migrants who were classed as principal applicants. A further 290,000 (23%) arrived as partners of principal applicants.

Of the 696,000 principal applicants, 7 per cent (51,000) were refugees, 52 per cent (363,900) were sponsored and 40 per cent (281,000) were unsponsored. Males made up 61 per cent of principal applicants.

Most of the sponsored principal applicants were sponsored by family members (79%). Employers sponsored 9 per cent and other persons and other organisations sponsored 8 and 5 per cent respectively (Table 2, Diagram 2).

Some 39 per cent of migrants were born in Europe and the former USSR, with more than half (59%) of that group born in the United Kingdom and Ireland. Other birthplace categories include Southeast Asia (18%), New Zealand (11%), Northeast Asia (9%) and the Middle East and North Africa (6%) (Table 1).

### Unemployment

The unemployment rate for migrants was 13.6 per cent, an increase of 3.9 percentage points since September 1990. The unemployment rate varied according to migration category. The rate for principal applicants was 14.8 per cent in September 1993 (5.2 per cent increase since the last survey), and 12.5 per cent for partners of principal applicants (3.4 per cent increase). The unemployment rate for sponsored migrants who were a principal applicant was 16.7 per cent but for those sponsored by an employer, the rate was 2.7 per cent. Migrants in the New Zealand migration category had an unemployment rate of 9.1 per cent (Table 2).

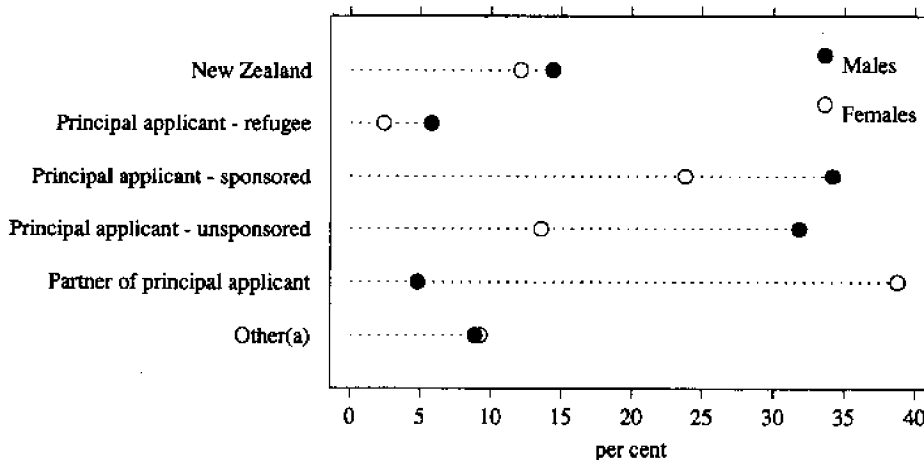
Migrants born in the Middle East and North Africa recorded the highest unemployment rate of 34.6 per cent, followed by those who were born in Southeast Asia and Northeast Asia with rates of 19.2 per cent and 14.1 per cent respectively (Table 4).

### Labour force participation

The labour force participation rate for migrants was 69.8 per cent at September 1993, a slight decrease from the estimate of 71.5 per cent for September 1990. The rates for male and female migrants were 85.3 per cent and 56.3 per cent respectively. The participation rate for those migrants who were sponsored was 69.0 per cent but 94.2 per cent for those sponsored by an employer. Migrants in the New Zealand migration category recorded a participation rate of 81.3 per cent (Table 2).

Those migrants born in Northern America had the highest participation rate (88.2%) followed by those born in Oceania (81.8%). Migrants born in the Middle East and North Africa recorded the lowest participation rate (55.8%) (Table 4, Diagram 3).

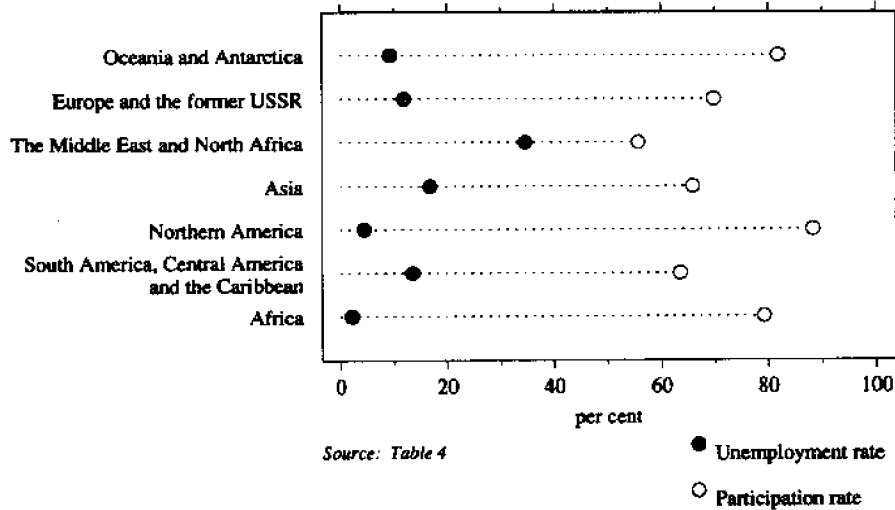
DIAGRAM 2. MIGRANTS WHO ARRIVED IN AUSTRALIA AFTER 1970 AGED 18 AND OVER: MIGRATION CATEGORY, SEPTEMBER 1993



(a) Includes 'No form completed' and 'Did not know'.  
Source: Table 2



DIAGRAM 3. MIGRANTS WHO ARRIVED IN AUSTRALIA AFTER 1970 AGED 18 AND OVER: BIRTHPLACE, SEPTEMBER 1993



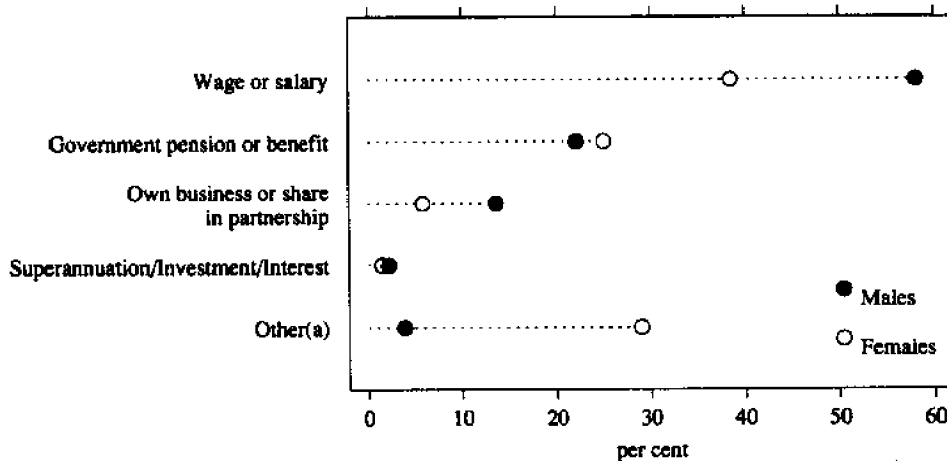
#### Main source of income

Of the 675,500 females in the migrant population, 39 per cent received a wage or salary as their main source of income in September 1993, compared with 46 per cent in September 1990. The receipt of a government pension or cash benefit was nominated by 25 per cent of female migrants compared with 19 per cent for the previous survey. Those who relied on their own business or share in a partnership remained unchanged at 6 per cent.

There were 592,600 males in the migrant population, 58 per cent of whom received a wage or salary as their current main source of income. This is an 8 percentage point decrease compared with the estimate of 66 per cent recorded in September 1990.

The next most common main source of income was a government pension or cash benefit, reported by 22 per cent of male migrants in September 1993, an increase from 15 per cent in September 1990. A further 14 per cent relied on their own business or share in partnership in September 1993 (Table 5, Diagram 4).

DIAGRAM 4. MIGRANTS WHO ARRIVED IN AUSTRALIA AFTER 1970 AGED 18 AND OVER: MAIN SOURCE OF INCOME, SEPTEMBER 1993



### Previous employment

Almost three quarters (562,600) of the 765,200 migrants who were employed in September 1993 were employed before they migrated. Of this group, 298,900 (53%) remained in the same occupation (Table 9).

The most common occupations for the 765,200 migrants employed in September 1993 were:

- Labourers and related workers (18%)
- Professionals (16%)
- Tradespersons (16%)
- Clerks (14%).

### Educational attainment

There were 623,800 migrants (49%) who had arrived in Australia with post-school qualifications. Of these migrants, a skilled or basic vocational qualification (44%), and a bachelor degree or higher (31%) were the two most common types of qualification attained before migration. The main fields in which qualifications were obtained were:

- Business administration (20%)
- Mechanical, electrical, automotive and manufacturing trades (17%)
- Health and medicine (11%)
- Engineering (10%).

A large proportion (29%) of migrants, who arrived with a post-school qualification, obtained that qualification in the United Kingdom and Ireland, followed by other countries in Europe (17%) and Southeast Asia (10%). A small proportion (1%) actually obtained their qualifications in Australia prior to migrating (Table 10).

There were 371,800 (60%) migrants who had acquired post-school qualifications before arrival who had those qualifications recognised in Australia.

Their qualifications were recognised by —

- Employers (42%)
- Licensing or registration board (29%)
- Union or professional association (21%)
- Other (8%).

Post-school qualifications of 252,100 (40%) migrants were not recognised in Australia (Table 11, Diagram 5).

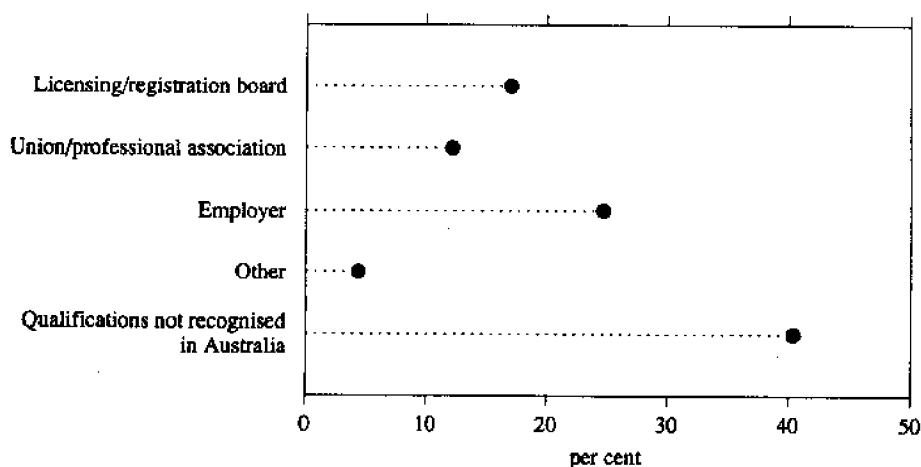
### English fluency

There were 783,800 migrants who were born in other than main English speaking countries. This represents 62 per cent of the total migrant population. Overall 16 per cent of this group usually spoke only English at home.

Of those 661,800 persons who spoke a language other than English at home, 65 per cent reported that they spoke English well or very well. Some 29 per cent reported that they could not speak English well and 7 per cent did not speak English at all.

A high proportion (94%) of migrants born in Southern Asia reported that they usually spoke English at home or spoke English well or very well. Some 39 per cent of migrants born in Southern Asia reported that English was the only language usually spoken at home (Table 12).

DIAGRAM 5. MIGRANTS WHO ARRIVED IN AUSTRALIA AFTER 1970 AGED 18 AND OVER WITH POST-SCHOOL QUALIFICATIONS: WHETHER QUALIFICATIONS RECOGNISED IN AUSTRALIA, SEPTEMBER 1993



Source: Table 11

TABLE 1. CIVILIAN POPULATION AGED 15 AND OVER: MARCH 1987, SEPTEMBER 1990 AND SEPTEMBER 1993

Survey conducted in —

	March 1987			September 1990			September 1993					
	Proportion of civilian population (per cent)		Persons	Proportion of civilian population (per cent)		Persons	Proportion of civilian population (per cent)		Persons			
	Males	Females '000-		Males	Females '000-		Males	Females '000-				
Civilian population aged 15 and over(a) —	6,018.3	6,154.3	12,172.6	100.0	6,494.4	6,609.8	13,104.3	100.0	6,769.8	6,904.0	13,673.7	100.0
Born in Australia	4,409.6	4,621.6	9,031.2	74.2	4,697.8	4,895.6	9,593.4	73.2	4,925.9	5,118.9	10,044.8	73.5
Born outside Australia	1,608.7	1,532.7	3,141.4	25.8	1,796.6	1,714.3	3,510.9	26.8	1,843.8	1,785.1	3,628.9	26.5
Aged 15-17 at survey date	45.1	40.3	85.4	0.7	37.9	38.6	76.5	0.6	45.1	42.2	87.3	0.6
Aged less than 18 on arrival	93.7	95.5	189.2	1.6	150.6	143.0	293.6	2.2	199.6	171.6	371.1	2.7
Arrived 1970 or before	1,016.2	926.0	1,942.2	16.0	992.6	918.5	1,911.1	14.6	959.6	857.2	1,816.8	13.3
Arrived after 1970	433.7	470.9	924.6	7.6	615.6	614.1	1,229.8	9.4	639.5	714.2	1,353.7	9.9
Temporary residency status(c)	21.4	16.6	38.0	0.3	43.7	27.2	70.9	0.5	46.9	38.7	85.6	0.6
Permanent residency status	432.4	454.3	886.7	7.3	571.9	587.0	1,158.9	8.8	592.6	675.5	1,268.1	9.3
Birthplace —												
Oceania	62.1	61.9	124.0	1.0	90.1	84.1	174.1	1.3	89.8	85.3	175.1	1.3
New Zealand	54.2	52.3	106.6	0.9	78.2	69.4	147.5	1.1	74.2	67.7	142.0	1.0
Other countries in Oceania	7.9	9.6	17.5	0.1	11.9	14.7	26.6	0.2	15.6	17.5	33.2	0.2
Europe and the former USSR	196.6	204.9	401.5	3.3	237.9	228.1	466.0	3.6	239.5	253.9	493.4	3.6
United Kingdom and Ireland	119.7	117.9	237.6	2.0	139.7	130.1	269.8	2.1	144.1	147.5	291.5	2.1
Other countries in Europe	76.9	87.0	163.9	1.3	98.2	98.0	196.2	1.5	95.5	106.4	201.9	1.5
The Middle East and North Africa	26.1	21.8	47.9	0.4	36.6	31.3	67.9	0.5	41.6	40.8	82.4	0.6
The Americas	21.5	26.5	48.0	0.4	25.5	32.6	58.1	0.4	28.0	36.3	64.2	0.5
Northeast Asia	14.7	17.4	32.0	0.3	41.1	43.9	85.0	0.6	47.9	62.9	110.8	0.8
Southeast Asia	62.7	72.2	134.9	1.1	82.0	104.5	186.5	1.4	86.8	137.9	224.7	1.6
Southern Asia	19.9	19.4	39.4	0.3	25.5	26.5	52.0	0.4	33.5	35.3	68.8	0.5
Africa	22.3	25.0	47.4	0.4	24.7	28.1	52.7	0.4	25.5	23.2	48.7	0.4
Other countries in Africa and Asia which could not be re-classified(b)	6.5	5.2	11.7	0.1	8.5	7.9	16.6	0.1	..	..	..	..

(a) Excludes institutionalised persons and boarding school pupils. (b) See Explanatory Notes, paragraphs 12 and 13, regarding comparability of country classifications of the reference periods surveyed. (c) In 1987, includes a small number of persons who were aged less than 18 on arrival in Australia.

TABLE 2. MIGRANTS WHO ARRIVED IN AUSTRALIA AFTER 1970 AGED 18 AND OVER:  
MIGRATION CATEGORY AND LABOUR FORCE STATUS, SEPTEMBER 1993

Migration category	Employed		Total	Unem- ployed -'000-	Labour force	Not in labour force	Total	Unemploy- ment rate - per cent -	Partici- pation rate
	Full-time	Part-time							
<b>MALES</b>									
New Zealand(a)	67.3	5.4	72.7	5.6	78.2	6.8	85.1	7.1	92.0
Principal applicant	283.8	21.6	305.5	53.8	359.2	67.3	426.5	15.0	84.2
Refugee	23.3	* 1.7	25.0	5.7	30.6	3.9	34.5	18.5	88.8
Sponsored(b)	127.5	9.8	137.3	26.9	164.1	38.8	202.9	16.4	80.9
By family	85.0	6.4	91.4	20.9	112.3	30.8	143.1	18.6	78.5
By other person	10.4	* 1.2	11.6	* 2.7	14.3	4.0	18.3	* 19.0	78.0
By employer	22.0	* 1.0	23.0	* 0.8	23.8	* 1.1	24.9	* 3.3	95.5
By other organisation	9.1	* 1.2	10.3	* 2.5	12.8	* 2.9	15.6	* 19.5	81.7
Un-sponsored	133.1	10.1	143.2	21.2	164.5	24.6	189.1	12.9	87.0
Partner of principal applicant(c)	21.7	* 1.3	23.0	* 2.0	24.9	* 3.3	28.2	* 7.9	88.3
Refugee	* 0.2	* 0.0	* 0.2	* 0.0	* 0.2	* 0.0	* 0.2	* 0.0	* 100.0
Sponsored	9.2	* 0.9	10.1	* 1.5	11.6	* 1.5	13.1	* 13.0	88.2
Un-sponsored	11.5	* 0.4	11.8	* 0.5	12.3	* 1.5	13.8	* 3.8	88.9
Other	24.7	* 2.8	27.5	4.8	32.2	6.3	38.5	14.8	83.7
No application form completed	5.2	* 0.3	5.5	* 1.3	6.8	* 2.2	9.0	* 19.0	75.3
Don't know	* 2.4	* 0.6	* 3.0	* 0.9	3.9	* 1.4	5.2	* 22.3	73.6
<b>Total</b>	<b>405.2</b>	<b>31.9</b>	<b>437.1</b>	<b>68.2</b>	<b>505.3</b>	<b>87.3</b>	<b>592.6</b>	<b>13.5</b>	<b>85.3</b>
<b>FEMALES</b>									
New Zealand(a)	31.5	18.9	50.4	6.7	57.1	24.4	81.5	11.8	70.1
Principal applicant	88.8	41.3	130.1	21.7	151.8	117.6	269.4	14.3	56.3
Refugee	5.8	* 1.0	6.8	* 1.5	8.3	8.3	16.5	* 17.8	50.0
Sponsored(b)	49.5	22.4	71.9	15.2	87.1	73.9	161.0	17.4	54.1
By family	41.5	19.5	60.9	13.8	74.7	68.5	143.2	18.5	52.2
By other person	* 3.0	* 1.7	4.8	* 1.4	6.1	* 3.3	9.4	* 22.5	65.2
By employer	4.6	* 1.1	5.6	* 0.0	5.6	* 0.7	6.3	* 0.0	89.0
By other organisation	* 0.4	* 0.2	* 0.6	* 0.0	* 0.6	* 1.2	* 1.8	* 0.0	* 33.9
Un-sponsored	33.6	17.8	51.4	5.1	56.4	35.5	91.9	9.0	61.4
Partner of principal applicant(c)	77.4	39.3	116.7	18.0	134.7	127.1	261.8	13.4	51.4
Refugee	5.7	* 0.4	6.1	* 1.2	7.4	4.5	11.9	* 16.9	62.0
Sponsored	32.3	16.7	49.0	7.3	56.4	64.5	120.9	13.0	46.6
Un-sponsored	37.3	21.8	59.1	9.0	68.1	53.0	121.1	13.2	56.2
Other	15.7	5.3	21.0	4.3	25.3	20.7	46.1	17.2	55.0
No application form completed	4.7	* 2.8	7.5	* 0.8	8.3	* 2.8	11.1	* 9.6	74.9
Don't know	* 1.9	* 0.6	* 2.5	* 0.5	* 3.0	* 2.6	5.6	* 15.8	* 53.0
<b>Total</b>	<b>220.0</b>	<b>108.1</b>	<b>328.1</b>	<b>52.1</b>	<b>380.2</b>	<b>295.3</b>	<b>675.5</b>	<b>13.7</b>	<b>56.3</b>
<b>PERSONS</b>									
New Zealand(a)	98.8	24.3	123.1	12.3	135.4	31.2	166.6	9.1	81.3
Principal applicant	372.6	62.9	435.5	75.5	511.1	184.9	696.0	14.8	73.4
Refugee	29.1	* 2.7	31.8	7.1	38.9	12.1	51.0	18.3	76.2
Sponsored(b)	176.9	32.2	209.2	42.0	251.2	112.7	363.9	16.7	69.0
By family	126.4	25.9	152.4	34.7	187.0	99.2	286.3	18.5	65.3
By other person	13.4	* 2.9	16.3	4.1	20.4	7.3	27.7	20.0	73.7
By employer	26.5	* 2.1	28.6	* 0.8	29.4	* 1.8	31.2	* 2.7	94.2
By other organisation	9.5	* 1.4	10.9	* 2.5	13.4	4.0	17.4	* 18.7	76.8
Un-sponsored	166.6	27.9	194.6	26.3	220.9	60.1	281.0	11.9	78.6
Partner of principal applicant(c)	99.1	40.5	139.6	20.0	159.6	130.4	290.0	12.5	55.0
Refugee	5.9	* 0.4	6.3	* 1.2	7.6	4.5	12.1	* 16.5	62.6
Sponsored	41.5	17.6	59.1	8.8	67.9	66.1	134.0	13.0	50.7
Un-sponsored	48.8	22.1	70.9	9.4	80.4	54.5	134.9	11.8	59.6
Other	40.4	8.1	48.4	9.1	57.6	27.0	84.6	15.8	68.0
No application form completed	9.9	* 3.1	13.1	* 2.1	15.2	5.0	20.2	* 13.9	75.1
Don't know	4.3	* 1.2	5.5	* 1.3	6.8	4.0	10.8	* 19.5	63.0
<b>Total</b>	<b>625.2</b>	<b>140.0</b>	<b>765.2</b>	<b>120.4</b>	<b>885.5</b>	<b>382.6</b>	<b>1,268.1</b>	<b>13.6</b>	<b>69.8</b>

(a) Includes persons born in New Zealand and those who were a citizen of New Zealand before migrating to Australia. (b) Includes persons whose source sponsorship status could not be determined. (c) Includes persons whose 'Partner of principal applicant' migration status could not be determined.

TABLE 3. MIGRANTS WHO ARRIVED IN AUSTRALIA AFTER 1970 AGED 18 AND OVER: SUMMARY OF CHARACTERISTICS AND WHETHER HAD A JOB JUST BEFORE MIGRATION, SEPTEMBER 1993 ('000)

	<i>Whether had a job just before migration</i>								
	<i>Had a job</i>			<i>Did not have a job</i>			<i>Total</i>		
	<i>Males</i>	<i>Females</i>	<i>Persons</i>	<i>Males</i>	<i>Females</i>	<i>Persons</i>	<i>Males</i>	<i>Females</i>	<i>Persons</i>
<i>Age on arrival —</i>									
18-24	92.1	98.3	190.5	53.9	85.8	139.7	146.0	184.1	330.2
25-34	200.7	167.6	368.3	44.6	114.1	158.7	245.3	281.7	527.0
35-44	110.1	59.1	169.2	16.1	51.9	68.1	126.2	111.1	237.3
45-54	34.0	21.6	55.7	7.6	21.2	28.8	41.7	42.8	84.5
55-59	7.5	7.0	14.5	* 3.0	11.0	14.0	10.5	18.0	28.5
60-64	6.2	3.5	9.7	4.0	15.0	18.9	10.2	18.5	28.7
65 and over	* 2.4	* 0.7	* 3.2	10.3	18.6	28.9	12.7	19.3	32.1
<i>Year of arrival —</i>									
Arrived 1971-1975	99.1	61.6	160.7	20.6	63.5	84.0	119.7	125.1	244.8
Arrived 1976-1980	69.5	51.8	121.3	23.5	60.3	83.8	93.0	112.1	205.1
Arrived 1981-1985	90.9	75.8	166.7	36.5	65.4	101.9	127.4	141.2	268.6
Arrived 1986-1990	143.9	128.3	272.3	43.6	94.9	138.5	187.5	223.2	410.8
Arrived 1991 to survey date	49.6	40.4	90.0	15.4	33.5	48.9	65.0	73.9	138.9
<i>Country of last residence —</i>									
Main English speaking countries	220.9	170.1	391.1	41.2	97.4	138.5	262.1	267.5	529.6
Other than main English speaking countries	232.1	187.8	419.9	98.4	220.2	318.6	330.5	408.0	738.5
<i>Whether had family in Australia just before migration —</i>									
Had family in Australia just before migration	227.0	184.4	411.4	77.5	188.8	266.4	304.6	373.2	677.8
Children only	14.1	13.4	27.5	12.4	34.0	46.3	26.5	47.3	73.8
Spouse/partner only	4.5	17.2	21.8	* 0.4	20.1	20.5	4.9	37.3	42.3
Children and spouse/partner only	* 1.5	* 0.3	* 1.8	* 0.0	* 0.2	* 0.2	* 1.5	* 0.5	* 2.0
Children and other family only	* 2.8	* 3.1	6.0	3.5	10.3	13.8	6.4	13.4	19.8
Spouse/partner and other family only	4.2	7.2	11.4	* 1.5	5.8	7.3	5.8	13.0	18.7
Children, husband/wife/partner and other family only	* 0.2	* 0.3	* 0.5	* 0.3	* 0.6	* 1.0	* 0.5	* 1.0	* 1.5
Brothers/sisters(in-law) only	99.9	66.8	166.7	28.9	59.2	88.1	128.8	126.0	254.8
Parents(in-law) only	10.9	6.2	17.1	* 3.2	6.0	9.2	14.1	12.1	26.3
Other family only	88.8	69.9	158.7	27.2	52.7	80.0	116.1	122.6	238.7
Did not have family in Australia just before migration	226.0	173.5	399.6	62.0	128.8	190.8	288.0	302.3	590.3
<i>Educational attainment on arrival —</i>									
With post-school qualifications on arrival	302.3	192.9	495.2	52.5	76.1	128.6	354.9	269.0	623.8
Bachelor degree or higher(a)	92.6	61.0	153.7	18.5	22.1	40.6	111.1	83.1	194.2
Undergraduate diploma	15.8	19.7	35.4	* 1.7	8.8	10.5	17.5	28.4	45.9
Associate diploma	49.7	32.8	82.5	11.4	14.8	26.2	61.1	47.6	108.7
Skilled and basic vocational qualifications	144.3	79.4	223.6	20.9	30.4	51.3	165.2	109.8	275.0
Without post-school qualifications	150.3	163.6	313.8	85.8	230.7	316.5	236.1	394.2	630.3
<i>Age left school —</i>									
18 and over	35.7	33.7	69.3	31.7	48.8	80.4	67.3	82.4	149.8
16 and 17	43.7	52.9	96.5	21.5	65.5	87.0	65.2	118.3	183.5
14 and 15	40.8	45.3	86.1	17.7	58.0	75.8	58.5	103.4	161.9
Under 14	18.1	11.8	29.9	7.7	39.7	47.4	25.9	51.5	77.3
Age left school not asked	12.1	20.0	32.0	7.2	18.7	25.9	19.2	38.7	57.9
Never attended school	* 0.5	* 1.5	* 1.9	* 1.2	10.9	12.0	* 1.6	12.3	14.0
<i>Highest qualification gained since arrival —</i>									
Had gained post-school qualifications since arrival	101.4	77.3	178.7	28.3	38.8	67.0	129.7	116.0	245.7
Bachelor degree or higher(a)	19.2	10.0	29.3	8.8	7.9	16.8	28.0	18.0	46.0
Undergraduate diploma	* 1.1	* 1.9	* 3.0	* 0.4	* 2.0	* 2.4	* 1.5	3.9	5.4
Associate diploma	21.4	12.0	33.4	6.5	5.8	12.2	27.9	17.8	45.7
Skilled and basic vocational qualifications	59.8	53.3	113.0	12.6	23.1	35.6	72.3	76.3	148.6
Had not gained post-school qualifications since arrival	351.6	280.7	632.3	111.3	278.8	390.1	462.9	559.5	1,022.4
<b>Total</b>	<b>453.1</b>	<b>357.9</b>	<b>811.0</b>	<b>139.5</b>	<b>317.6</b>	<b>457.1</b>	<b>592.6</b>	<b>675.5</b>	<b>1,268.1</b>

(a) Includes post-graduate diplomas and higher degrees.

TABLE 4. MIGRANTS WHO ARRIVED IN AUSTRALIA AFTER 1970 AGED 18 AND OVER:  
BIRTHPLACE AND LABOUR FORCE STATUS, SEPTEMBER 1993

Birthplace	Employed		Total	Unem- ployed -'000-	Labour force	Not in labour force	Total	Unemploy- ment rate - per cent -	Partici- pation rate
	Full-time	Part-time							
MALES									
Oceania and Antarctica	71.6	5.2	76.8	6.3	83.2	6.7	89.8	7.6	92.6
New Zealand	60.8	4.3	65.1	4.2	69.3	4.9	74.2	6.0	93.4
Fiji	7.4	* 0.6	8.0	* 1.0	9.0	* 0.6	9.7	* 11.5	93.6
Europe and the former USSR	164.5	10.0	174.6	25.4	200.0	39.6	239.5	12.7	83.5
Germany	5.2	* 0.1	5.3	* 0.0	5.3	* 1.3	6.6	* 0.0	79.9
Poland	8.0	* 0.3	8.4	* 2.3	10.7	* 1.8	12.4	* 21.5	85.6
United Kingdom/Ireland	106.3	5.6	111.8	9.7	121.6	22.5	144.1	8.0	84.4
Former Yugoslav Republics	13.7	* 0.7	14.4	* 3.3	17.7	5.6	23.3	* 18.9	76.0
The Middle East and North Africa	20.3	* 2.9	23.2	10.5	33.8	7.8	41.6	31.2	81.2
Lebanon	5.7	* 1.4	7.1	6.1	13.1	3.8	16.9	46.2	77.8
Turkey	4.4	* 0.6	5.0	* 2.1	7.0	* 1.0	8.0	* 29.4	87.5
Southeast Asia	52.5	4.4	56.9	13.7	70.6	16.2	86.8	19.4	81.3
Indonesia	4.2	* 0.1	4.3	* 0.3	4.6	* 1.3	5.9	* 6.4	77.8
Malaysia	10.8	* 0.9	11.7	* 1.3	13.0	* 2.0	14.9	* 9.8	86.8
Philippines	8.1	* 1.1	9.2	* 0.8	10.0	* 1.6	11.6	* 7.7	86.6
Viet Nam	22.0	* 1.4	23.5	9.4	32.9	9.3	42.2	28.6	77.9
Northeast Asia	28.6	4.6	33.2	5.1	38.3	9.7	47.9	13.2	79.9
China	12.0	* 1.8	13.8	* 2.4	16.2	3.9	20.1	* 14.7	80.8
Hong Kong	11.1	* 1.0	12.1	* 1.8	13.9	* 2.5	16.4	* 12.6	84.6
Southern Asia	26.0	* 0.8	26.8	4.1	30.9	* 2.6	33.5	13.2	92.2
Sri Lanka	9.0	* 0.1	9.1	* 1.8	10.9	* 0.7	11.6	* 16.6	94.1
India	13.6	* 0.4	13.9	* 1.6	15.6	* 1.1	16.6	* 10.5	93.7
Northern America	8.4	* 1.1	9.5	* 0.4	10.0	* 1.1	11.1	* 4.5	89.7
United States of America	6.2	* 1.0	7.2	* 0.3	7.5	* 0.7	8.2	* 3.7	91.9
South America, Central America and the Caribbean	11.7	* 1.0	12.7	* 2.1	14.8	* 2.0	16.8	* 14.3	87.9
Chile	5.2	* 0.0	5.2	* 0.8	6.0	* 0.7	6.7	* 12.6	89.8
Africa	21.5	* 1.8	23.3	* 0.6	23.9	* 1.6	25.5	* 2.4	93.6
<b>Total</b>	<b>405.2</b>	<b>31.9</b>	<b>437.1</b>	<b>68.2</b>	<b>505.3</b>	<b>87.3</b>	<b>592.6</b>	<b>13.5</b>	<b>85.3</b>
FEMALES									
Oceania and Antarctica	34.7	18.2	52.9	7.1	60.0	25.2	85.3	11.8	70.4
New Zealand	28.3	16.6	44.9	5.0	49.9	17.8	67.7	10.0	73.7
Fiji	5.2	* 1.1	6.3	* 0.8	7.1	* 3.2	10.3	* 11.5	68.7
Europe and the former USSR	77.9	50.9	128.8	15.7	144.5	109.4	253.9	10.9	56.9
Germany	* 2.1	* 2.9	5.0	* 1.1	6.1	* 3.3	9.4	* 18.2	65.3
Poland	4.7	* 2.0	6.7	* 0.6	7.3	7.3	14.6	* 8.4	49.9
United Kingdom/Ireland	48.1	33.7	81.8	6.2	88.0	59.5	147.5	7.0	59.7
Former Yugoslav Republics	8.1	* 3.4	11.5	* 2.9	14.4	11.4	25.8	* 20.1	55.8
The Middle East and North Africa	4.0	* 2.9	6.9	5.4	12.2	28.6	40.8	43.9	30.0
Lebanon	* 0.3	* 1.0	* 1.2	* 2.0	* 3.2	14.5	17.7	* 62.0	* 18.1
Turkey	* 1.5	* 0.3	* 1.8	* 0.9	* 2.7	4.6	7.3	* 31.8	* 37.0
Southeast Asia	48.9	13.8	62.7	14.7	77.4	60.5	137.9	19.0	56.1
Indonesia	4.0	* 1.3	5.2	* 0.4	5.6	4.9	10.5	* 6.8	53.4
Malaysia	8.7	3.8	12.5	* 1.2	13.7	7.4	21.1	* 8.7	65.1
Philippines	16.5	4.8	21.2	* 2.0	23.3	15.9	39.1	* 8.7	59.5
Viet Nam	13.5	* 1.9	15.5	7.5	22.9	23.1	46.0	32.5	49.8
Northeast Asia	17.0	6.4	23.4	4.2	27.7	35.2	62.9	15.2	44.0
China	8.3	* 1.7	10.0	* 2.3	12.3	14.1	26.4	* 18.6	46.7
Hong Kong	5.3	3.5	8.9	* 0.7	9.6	9.8	19.3	* 7.2	49.5
Southern Asia	14.3	4.6	18.8	* 2.9	21.7	13.5	35.3	* 13.4	61.6
Sri Lanka	* 2.1	* 1.7	3.9	* 0.8	4.7	5.7	10.4	* 17.8	45.4
India	11.5	* 2.0	13.5	* 1.2	14.7	6.3	21.0	* 8.2	70.1
Northern America	7.5	* 3.2	10.7	* 0.5	11.3	* 1.7	13.0	* 4.5	86.9
United States of America	5.4	* 2.3	7.7	* 0.3	8.0	* 1.0	8.9	* 3.8	89.3
South America, Central America and the Caribbean	6.1	* 3.3	9.4	* 1.3	10.7	12.6	23.3	* 12.6	45.9
Chile	* 2.8	* 0.5	* 3.2	* 0.5	3.7	4.9	8.6	* 12.5	42.7
Africa	9.7	4.8	14.4	* 0.3	14.7	8.5	23.2	* 1.8	63.3
<b>Total</b>	<b>220.0</b>	<b>108.1</b>	<b>328.1</b>	<b>52.1</b>	<b>380.2</b>	<b>295.3</b>	<b>675.5</b>	<b>13.7</b>	<b>56.3</b>

TABLE 4. MIGRANTS WHO ARRIVED IN AUSTRALIA AFTER 1970 AGED 18 AND OVER:  
BIRTHPLACE AND LABOUR FORCE STATUS, SEPTEMBER 1993—continued

Birthplace	Employed			Unem- ployed -'000-	Labour force	Not in labour force	Total	Unemploy- ment rate - per cent -	Partici- pation rate
	Full-time	Part-time	Total						
PERSONS									
Oceania and Antarctica	106.3	23.4	129.8	13.4	143.2	31.9	175.1	9.4	81.8
New Zealand	89.1	20.9	110.1	9.2	119.3	22.7	142.0	7.7	84.0
Fiji	12.6	* 1.7	14.3	* 1.9	16.1	3.8	20.0	* 11.5	80.7
Europe and the former USSR	242.4	60.9	303.4	41.1	344.5	149.0	493.4	11.9	69.8
Germany	7.3	* 3.0	10.3	* 1.1	11.4	4.6	15.9	* 9.8	71.3
Poland	12.7	* 2.3	15.0	* 2.9	17.9	9.1	27.0	* 16.2	66.3
United Kingdom/Ireland	154.4	39.2	193.6	15.9	209.5	82.0	291.5	7.6	71.9
Former Yugoslav Republics	21.8	4.1	25.9	6.3	32.2	17.0	49.2	19.5	65.4
The Middle East and North Africa	24.3	5.8	30.1	15.9	46.0	36.4	82.4	34.6	55.8
Lebanon	5.9	* 2.3	8.3	8.0	16.3	18.2	34.6	49.3	47.2
Turkey	5.9	* 0.9	6.8	* 2.9	9.7	5.6	15.3	* 30.0	63.5
Southeast Asia	101.4	18.2	119.6	28.4	148.0	76.7	224.7	19.2	65.9
Indonesia	8.2	* 1.3	9.5	* 0.7	10.2	6.2	16.4	* 6.6	62.2
Malaysia	19.5	4.7	24.2	* 2.5	26.6	9.3	36.0	* 9.2	74.1
Philippines	24.6	5.9	30.5	* 2.8	33.3	17.4	50.7	* 8.4	65.7
Viet Nam	35.6	* 3.4	38.9	16.9	55.8	32.5	88.3	30.2	63.2
Northeast Asia	45.6	11.1	56.7	9.3	65.9	44.9	110.8	14.1	59.5
China	20.3	3.6	23.9	4.7	28.5	17.9	46.4	16.4	61.4
Hong Kong	16.4	4.6	21.0	* 2.4	23.4	12.3	35.7	* 10.4	65.6
Southern Asia	40.2	5.4	45.6	7.0	52.6	16.1	68.8	13.3	76.5
Sri Lanka	11.2	* 1.8	13.0	* 2.6	15.6	6.3	22.0	* 17.0	71.1
India	25.0	* 2.4	27.4	* 2.8	30.3	7.3	37.6	* 9.3	80.5
Northern America	16.0	4.3	20.3	* 1.0	21.2	* 2.8	24.1	* 4.5	88.2
United States of America	11.6	* 3.3	14.9	* 0.6	15.5	* 1.6	17.1	* 3.8	90.6
South America, Central America and the Caribbean	17.8	4.3	22.1	3.5	25.5	14.6	40.2	13.6	63.5
Chile	8.0	* 0.5	8.5	* 1.2	9.7	5.6	15.3	* 12.6	63.2
Africa	31.2	6.6	37.7	* 0.8	38.6	10.1	48.7	* 2.2	79.2
<b>Total</b>	<b>625.2</b>	<b>140.0</b>	<b>765.2</b>	<b>120.4</b>	<b>885.5</b>	<b>382.6</b>	<b>1,268.1</b>	<b>13.6</b>	<b>69.8</b>

TABLE 5. MIGRANTS WHO ARRIVED IN AUSTRALIA AFTER 1970 AGED 18 AND OVER:  
MAIN SOURCE OF INCOME AT SEPTEMBER 1993 AND AGE, SEPTEMBER 1993  
(\*000)

Main source of income at September 1993	Age							Total
	18-24	25-34	35-44	45-54	55-59	60-64	65 and over	
MALES								
Wage or salary	8.4	94.2	136.5	79.9	15.7	8.4	* 1.0	344.2
Government pension or cash benefit	7.1	24.1	27.9	22.4	8.4	12.1	29.3	131.4
Own business or share in partnership	* 1.0	12.2	36.4	25.2	4.0	* 1.1	* 1.0	80.8
Nil/spouse's income	* 1.6	5.2	4.1	* 2.8	* 1.5	* 0.9	* 1.2	17.3
Superannuation/Investment/Interest/Other	* 1.1	* 1.0	* 3.3	4.9	* 2.9	* 1.9	3.8	18.9
<b>Total</b>	<b>19.2</b>	<b>136.8</b>	<b>208.2</b>	<b>135.2</b>	<b>32.5</b>	<b>24.5</b>	<b>36.2</b>	<b>592.6</b>
FEMALES								
Wage or salary	10.0	75.8	111.0	54.0	6.0	* 3.2	* 0.9	260.9
Government pension or cash benefit	7.7	31.6	30.9	20.4	13.6	16.1	49.0	169.3
Own business or share in partnership	* 0.6	8.7	16.2	12.1	* 1.1	* 0.3	* 0.0	39.0
Nil/spouse's income	7.9	57.1	69.8	38.6	9.3	3.5	4.2	190.5
Superannuation/Investment/Interest/Other	* 0.8	* 1.8	* 3.0	* 2.7	* 2.1	* 0.7	4.8	15.9
<b>Total</b>	<b>27.0</b>	<b>175.0</b>	<b>230.9</b>	<b>127.8</b>	<b>32.1</b>	<b>23.7</b>	<b>58.9</b>	<b>675.5</b>
PERSONS								
Wage or salary	18.4	170.0	247.5	133.9	21.7	11.7	* 1.9	605.1
Government pension or cash benefit	14.9	55.7	58.8	42.8	22.0	28.2	78.3	300.6
Own business or share in partnership	* 1.6	20.9	52.6	37.3	5.1	* 1.3	* 1.0	119.8
Nil/spouse's income	9.5	62.4	73.9	41.4	10.9	4.4	5.4	207.8
Superannuation/Investment/Interest/Other	* 1.8	* 2.8	6.2	7.6	5.0	* 2.6	8.6	34.8
<b>Total</b>	<b>46.2</b>	<b>311.8</b>	<b>439.1</b>	<b>263.0</b>	<b>64.6</b>	<b>48.2</b>	<b>95.1</b>	<b>1,268.1</b>

TABLE 6. MIGRANTS WHO ARRIVED IN AUSTRALIA AFTER 1970 AGED 18 AND OVER:  
MIGRATION CATEGORY AND MAIN SOURCE OF INCOME AT SEPTEMBER 1993  
(<sup>'000</sup>)

Migration category	Main source of income at September 1993					Total
	Wage or salary	Government pension or cash benefit	Own business or share in partnership	Nil/spouse's income	Super-annuation/Investment/Interest/Other	
<b>MALES</b>						
New Zealand(a)	57.1	9.7	13.4	* 2.2	* 2.6	85.1
Principal applicant	239.8	104.6	57.0	11.6	13.5	426.5
Refugee	21.5	9.6	* 3.0	* 0.5	* 0.0	34.5
Sponsored(b)	111.6	57.7	21.6	5.2	6.9	202.9
By family	75.0	45.2	13.1	4.5	5.4	143.1
By other person	8.7	5.4	* 2.9	* 0.6	* 0.8	18.3
By employer	20.6	* 1.7	* 2.1	* 0.2	* 0.4	24.9
By other organisation	6.6	5.5	* 3.2	* 0.0	* 0.4	15.6
Un-sponsored	106.8	37.4	32.4	5.9	6.6	189.1
Partner of principal applicant(c)	19.3	3.6	* 3.3	* 0.9	* 1.1	28.2
Refugee	* 0.2	* 0.0	* 0.0	* 0.0	* 0.0	* 0.2
Sponsored	7.5	* 2.8	* 2.1	* 0.4	* 0.3	13.1
Un-sponsored	10.8	* 0.5	* 1.2	* 0.5	* 0.8	13.8
Other	21.5	8.9	5.3	* 1.8	* 1.0	38.5
No application form completed	4.2	* 2.3	* 1.0	* 0.8	* 0.7	9.0
Don't know	* 2.3	* 2.2	* 0.7	* 0.0	* 0.0	5.2
<b>Total</b>	<b>344.2</b>	<b>131.4</b>	<b>80.8</b>	<b>17.3</b>	<b>18.9</b>	<b>592.6</b>
<b>FEMALES</b>						
New Zealand(a)	40.6	14.9	5.7	18.8	* 1.5	81.5
Principal applicant	107.6	72.1	12.6	71.3	5.9	269.4
Refugee	5.6	7.0	* 0.9	* 3.1	* 0.0	16.5
Sponsored(b)	59.6	47.1	7.3	44.3	* 2.7	161.0
By family	50.0	43.4	6.5	40.6	* 2.7	143.2
By other person	4.7	* 2.4	* 0.1	* 2.2	* 0.0	9.4
By employer	4.5	* 0.0	* 0.7	* 1.1	* 0.0	6.3
By other organisation	* 0.4	* 1.0	* 0.0	* 0.3	* 0.0	* 1.8
Un-sponsored	42.4	18.0	4.4	24.0	* 3.2	91.9
Partner of principal applicant(c)	88.8	64.1	17.2	85.0	6.7	261.8
Refugee	4.8	* 3.2	* 1.0	* 2.9	* 0.1	11.9
Sponsored	39.0	34.5	7.1	37.2	* 3.1	120.9
Un-sponsored	43.3	24.4	8.8	41.4	* 3.2	121.1
Other	17.1	15.2	* 1.8	11.2	* 0.8	46.1
No application form completed	5.7	* 1.5	* 0.8	* 2.8	* 0.4	11.1
Don't know	* 1.2	* 1.5	* 1.0	* 1.3	* 0.5	5.6
<b>Total</b>	<b>260.9</b>	<b>169.3</b>	<b>39.0</b>	<b>190.5</b>	<b>15.9</b>	<b>675.5</b>
<b>PERSONS</b>						
New Zealand(a)	97.6	24.6	19.2	21.0	4.2	166.6
Principal applicant	347.4	176.6	69.6	83.0	19.4	696.0
Refugee	27.0	16.6	3.9	3.5	* 0.0	51.0
Sponsored(b)	171.2	104.7	28.8	49.5	9.6	363.9
By family	125.1	88.5	19.5	45.0	8.1	286.3
By other person	13.3	7.8	* 3.0	* 2.8	* 0.8	27.7
By employer	25.1	* 1.7	* 2.8	* 1.3	* 0.4	31.2
By other organisation	7.1	6.5	* 3.2	* 0.3	* 0.4	17.4
Un-sponsored	149.2	55.3	36.8	29.9	9.8	281.0
Partner of principal applicant(c)	108.1	67.7	20.5	85.9	7.9	290.0
Refugee	5.0	* 3.2	* 1.0	* 2.9	* 0.1	12.1
Sponsored	46.5	37.3	9.2	37.6	3.5	134.0
Un-sponsored	54.1	24.9	10.0	41.9	4.0	134.9
Other	38.6	24.1	7.1	13.0	* 1.8	84.6
No application form completed	9.9	3.8	* 1.7	3.6	* 1.2	20.2
Don't know	3.5	3.8	* 1.8	* 1.3	* 0.5	10.8
<b>Total</b>	<b>605.1</b>	<b>300.6</b>	<b>119.8</b>	<b>207.8</b>	<b>34.8</b>	<b>1,268.1</b>

(a) Includes persons born in New Zealand and those who were a citizen of New Zealand before migrating to Australia. (b) Includes persons whose source sponsorship could not be determined. (c) Includes persons whose 'Partner of principal applicant' migration status could not be determined



TABLE 7. MIGRANTS WHO ARRIVED IN AUSTRALIA AFTER 1970 AGED 18 AND OVER:  
EDUCATIONAL ATTAINMENT ON ARRIVAL AND LABOUR FORCE STATUS, SEPTEMBER 1993

Educational attainment on arrival	Employed		Total	Unem- ployed -'000-	Labour force	Not in labour force	Total	Unemploy- ment rate - per cent -	Partici- pation rate
	Full-time	Part-time							
<b>MALES</b>									
With post-school qualifications on arrival	262.1	20.5	282.6	37.5	320.1	34.8	354.9	11.7	90.2
Bachelor degree or higher(a)	84.1	5.4	89.4	12.8	102.2	8.9	111.1	12.5	92.0
Undergraduate diploma	13.3	* 1.2	14.4	* 1.7	16.1	* 1.4	17.5	* 10.3	92.0
Associate diploma	44.5	* 3.2	47.7	6.2	53.9	7.2	61.1	11.5	88.2
Skilled and basic vocational qualifications	120.3	10.8	131.0	16.8	147.9	17.3	165.2	11.4	89.5
Without post-school qualifications	142.8	11.4	154.2	30.7	185.0	51.1	236.1	16.6	78.3
Age left school —									
18 and over	43.4	4.1	47.6	7.7	55.3	12.1	67.3	14.0	82.1
16 and 17	44.7	4.2	49.0	7.3	56.2	9.0	65.2	12.9	86.3
14 and 15	30.8	* 1.8	32.6	8.2	40.9	17.6	58.5	20.1	69.8
Under 14	9.5	* 0.6	10.1	5.5	15.6	10.3	25.9	35.4	60.2
Age left school not asked	14.4	* 0.7	15.0	* 2.0	17.1	* 2.2	19.2	* 11.9	88.7
Never attended school	* 0.3	* 0.0	* 0.3	* 0.0	* 0.3	* 1.4	* 1.6	* 0.0	* 15.8
<b>Total</b>	<b>405.2</b>	<b>31.9</b>	<b>437.1</b>	<b>68.2</b>	<b>505.3</b>	<b>87.3</b>	<b>592.6</b>	<b>13.5</b>	<b>85.3</b>
<b>FEMALES</b>									
With post-school qualifications on arrival	112.0	55.4	167.5	20.6	188.1	80.9	269.0	11.0	69.9
Bachelor degree or higher(a)	41.8	14.0	55.8	6.2	61.9	21.2	83.1	9.9	74.5
Undergraduate diploma	13.2	5.6	18.8	* 1.7	20.5	7.9	28.4	* 8.4	72.1
Associate diploma	16.1	9.2	25.2	3.5	28.7	18.9	47.6	12.1	60.4
Skilled and basic vocational qualifications	41.0	26.6	67.7	9.3	76.9	32.9	109.8	12.1	70.1
Without post-school qualifications	107.4	52.4	159.8	30.8	190.6	203.6	394.2	16.2	48.3
Age left school —									
18 and over	28.4	9.3	37.7	7.8	45.5	36.9	82.4	17.1	55.2
16 and 17	36.2	20.3	56.5	11.1	67.5	50.8	118.3	16.4	57.1
14 and 15	22.1	13.5	35.5	5.5	41.1	62.3	103.4	13.4	39.7
Under 14	6.4	* 3.2	9.6	4.5	14.1	37.3	51.5	31.9	27.5
Age left school not asked	14.3	6.1	20.4	* 2.0	22.3	16.3	38.7	* 8.7	57.8
Never attended school	* 0.6	* 0.3	* 0.9	* 0.6	* 1.5	10.8	12.3	* 41.7	* 12.5
<b>Total</b>	<b>220.0</b>	<b>108.1</b>	<b>328.1</b>	<b>52.1</b>	<b>380.2</b>	<b>295.3</b>	<b>675.5</b>	<b>13.7</b>	<b>56.3</b>
<b>PERSONS</b>									
With post-school qualifications on arrival	374.1	75.9	450.0	58.1	508.2	115.7	623.8	11.4	81.5
Bachelor degree or higher(a)	125.8	19.4	145.2	19.0	164.2	30.1	194.2	11.5	84.5
Undergraduate diploma	26.5	6.7	33.2	* 3.4	36.6	9.3	45.9	* 9.2	79.7
Associate diploma	60.5	12.4	72.9	9.7	82.6	26.1	108.7	11.7	76.0
Skilled and basic vocational qualifications	161.3	37.4	198.7	26.1	224.8	50.2	275.0	11.6	81.8
Without post-school qualifications	250.2	63.8	314.0	61.6	375.6	254.7	630.3	16.4	59.6
Age left school —									
18 and over	71.8	13.5	85.3	15.5	100.8	49.0	149.8	15.4	67.3
16 and 17	81.0	24.5	105.4	18.3	123.8	59.7	183.5	14.8	67.4
14 and 15	52.9	15.3	68.2	13.7	81.9	79.9	161.9	16.8	50.6
Under 14	15.9	3.8	19.7	10.0	29.7	47.6	77.3	33.7	38.4
Age left school not asked	28.7	6.7	35.4	4.0	39.4	18.5	57.9	10.1	68.1
Never attended school	* 0.8	* 0.3	* 1.2	* 0.6	* 1.8	12.2	14.0	* 35.7	* 12.8
<b>Total</b>	<b>625.2</b>	<b>140.0</b>	<b>765.2</b>	<b>120.4</b>	<b>885.5</b>	<b>382.6</b>	<b>1,268.1</b>	<b>13.6</b>	<b>69.8</b>

(a) Includes post-graduate diplomas and higher degrees.

TABLE 8. MIGRANTS WHO ARRIVED IN AUSTRALIA AFTER 1970 AGED 18 AND OVER:  
COUNTRY OF LAST RESIDENCE AND LABOUR FORCE STATUS, SEPTEMBER 1993

Country of last residence	Employed		Total	Unem- ployed -'000-	Labour force	Not in labour force	Total	Unemploy- ment rate - per cent -	Partici- pation rate
	Full-time	Part-time							
<b>MALES</b>									
Oceania	79.2	5.8	85.0	7.9	93.0	9.9	102.8	8.5	90.4
New Zealand	68.0	5.2	73.2	7.1	80.3	8.1	88.4	8.8	90.8
Other countries	11.2	* 0.6	11.8	* 0.9	12.7	* 1.8	14.4	* 6.9	87.7
Europe & the former USSR	165.7	10.2	175.9	25.4	201.4	33.7	235.1	12.6	85.6
United Kingdom/Ireland	106.6	5.5	112.1	9.4	121.5	19.7	141.2	7.7	86.0
Other countries	59.1	4.7	63.8	16.0	79.9	14.0	93.9	20.1	85.1
The Middle East and North Africa	19.7	* 2.5	22.2	8.4	30.6	8.0	38.6	27.4	79.3
Southeast Asia	50.6	4.4	55.0	12.9	67.9	17.5	85.4	19.0	79.5
Northeast Asia	27.5	4.5	31.9	5.0	37.0	8.4	45.3	13.6	81.6
Southern Asia	20.0	* 0.9	21.0	* 2.9	23.9	* 2.2	26.1	* 12.3	91.7
The Americas	22.8	* 1.8	24.5	4.2	28.8	5.2	34.0	14.7	84.6
Africa	19.7	* 1.7	21.5	* 1.4	22.8	* 2.5	25.3	* 6.0	90.3
<b>Total</b>	<b>405.2</b>	<b>31.9</b>	<b>437.1</b>	<b>68.2</b>	<b>505.3</b>	<b>87.3</b>	<b>592.6</b>	<b>13.5</b>	<b>85.3</b>
<b>FEMALES</b>									
Oceania	37.5	21.4	58.9	8.1	67.0	31.3	98.2	12.0	68.2
New Zealand	29.6	19.8	49.4	6.7	56.1	25.5	81.6	11.9	68.8
Other countries	7.9	* 1.6	9.5	* 1.4	10.9	5.8	16.6	* 12.6	65.3
Europe & the former USSR	81.9	48.1	130.0	15.3	145.3	107.8	253.0	10.5	57.4
United Kingdom/Ireland	50.7	32.3	83.0	6.3	89.3	58.6	147.9	7.0	60.4
Other countries	31.2	15.7	47.0	9.0	56.0	49.2	105.2	16.1	53.2
The Middle East and North Africa	3.5	* 3.1	6.6	4.6	11.2	27.4	38.6	40.9	29.0
Southeast Asia	43.7	13.2	56.9	13.2	70.1	58.5	128.6	18.8	54.5
Northeast Asia	16.4	6.5	22.9	5.3	28.2	33.0	61.2	18.7	46.0
Southern Asia	10.0	3.8	13.8	* 2.3	16.1	10.8	26.9	* 14.4	59.8
The Americas	15.8	8.3	24.1	* 2.3	26.4	17.5	43.8	* 8.7	60.2
Africa	11.1	3.8	14.9	* 1.2	16.1	9.0	25.1	* 7.2	64.1
<b>Total</b>	<b>220.0</b>	<b>108.1</b>	<b>328.1</b>	<b>52.1</b>	<b>380.2</b>	<b>295.3</b>	<b>675.5</b>	<b>13.7</b>	<b>56.3</b>
<b>PERSONS</b>									
Oceania	116.7	27.2	144.0	16.0	159.9	41.1	201.1	10.0	79.5
New Zealand	97.6	25.1	122.7	13.8	136.4	33.6	170.0	10.1	80.2
Other countries	19.1	* 2.2	21.3	* 2.2	23.5	7.5	31.1	* 9.5	75.7
Europe & the former USSR	247.6	58.3	305.9	40.7	346.6	141.5	488.1	11.7	71.0
United Kingdom/Ireland	157.3	37.9	195.1	15.7	210.8	78.3	289.1	7.4	72.9
Other countries	90.3	20.4	110.8	25.0	135.8	63.2	199.0	18.4	68.2
The Middle East and North Africa	23.2	5.6	28.9	13.0	41.8	35.4	77.2	31.0	54.2
Southeast Asia	94.3	17.6	111.9	26.1	138.0	76.0	214.0	18.9	64.5
Northeast Asia	43.9	11.0	54.8	10.3	65.1	41.4	106.5	15.8	61.2
Southern Asia	30.0	4.7	34.7	5.2	40.0	13.0	53.0	13.1	75.4
The Americas	38.6	10.1	48.6	6.5	55.2	22.7	77.9	11.9	70.9
Africa	30.9	5.5	36.4	* 2.5	38.9	11.5	50.4	* 6.5	77.2
<b>Total</b>	<b>625.2</b>	<b>140.0</b>	<b>765.2</b>	<b>120.4</b>	<b>885.5</b>	<b>382.6</b>	<b>1,268.1</b>	<b>13.6</b>	<b>69.8</b>

TABLE 9. MIGRANTS WHO ARRIVED IN AUSTRALIA AFTER 1970 AGED 18 AND OVER:  
OCCUPATION AT SEPTEMBER 1993 AND OCCUPATION JUST BEFORE MIGRATION, SEPTEMBER 1993  
(\*000)

Occupation at September 1993	Occupation just before migration										Total	Did not have a job just before migration	Total
	Managers and admin- istrators	Pro- fessionals	Para- pro- fessionals	Trades- persons	Clerks	Salespersons and personal service workers	Plant and machine operators, and drivers	Labourers and related workers	Total	Did not have a job just before migration			
Employed	49.5	127.2	41.6	117.0	87.9	57.3	32.4	49.7	562.6	202.6	765.2		
Managers and administrators	20.2	11.9	* 2.0	6.6	3.6	6.3	* 1.6	* 1.3	53.5	13.8	67.3		
Professionals	5.5	77.3	* 3.1	* 1.6	4.9	* 3.0	* 0.8	* 0.3	96.6	29.4	126.0		
Para-professionals	* 1.8	5.6	21.8	* 3.1	* 2.6	* 1.5	* 1.2	* 1.0	38.6	8.8	47.4		
Tradespersons	4.3	5.2	* 2.2	71.4	* 2.7	3.8	5.1	7.2	101.9	17.5	119.3		
Clerks	* 3.0	9.4	* 3.3	* 3.2	47.2	6.6	* 2.1	* 3.3	78.1	31.2	109.3		
Salespersons and personal service workers	6.5	6.1	* 3.1	7.8	13.3	23.4	* 2.9	* 3.4	66.5	25.9	92.5		
Plant and machine operators, and drivers	* 2.6	* 3.1	* 1.2	9.2	* 2.5	5.1	11.4	7.0	42.0	25.2	67.2		
Labourers and related workers	5.7	8.6	4.9	14.1	11.1	7.5	7.4	26.2	85.4	50.8	136.2		
Unemployed	4.9	16.2	3.5	17.7	10.6	7.1	5.1	8.8	73.9	46.4	120.4		
Not in the labour force	20.4	23.5	12.5	23.7	36.2	24.2	10.2	23.9	174.5	208.1	382.6		
<b>Total</b>	<b>74.7</b>	<b>166.9</b>	<b>57.6</b>	<b>158.3</b>	<b>134.7</b>	<b>88.6</b>	<b>47.7</b>	<b>82.3</b>	<b>811.0</b>	<b>457.1</b>	<b>1,268.1</b>		

**TABLE 10. MIGRANTS WHO ARRIVED IN AUSTRALIA AFTER 1970 AGED 18 AND OVER WITH POST-SCHOOL QUALIFICATIONS: LEVEL OF POST-SCHOOL QUALIFICATION ON ARRIVAL, FIELD OF QUALIFICATION OBTAINED BEFORE MIGRATION AND COUNTRY IN WHICH QUALIFICATION WAS OBTAINED BEFORE MIGRATION, SEPTEMBER 1993**  
(\*000)

	Country in which qualification was obtained before migration									Total(a)
	Europe & the former USSR		The Middle East and North Africa	South-east Asia	North-east Asia	The Americas	South-east Asia	Africa		
	United Kingdom	Other countries								
<i>Level of post-school qualification on arrival —</i>										
Bachelor degree or higher(b)	14.3	40.1	23.2	9.2	26.8	18.7	24.5	23.3	9.0	194.2
Undergraduate diploma	7.4	13.4	7.2	* 2.3	3.5	4.5	* 2.5	* 1.3	* 3.2	45.9
Associate diploma	13.8	28.5	23.5	4.9	12.1	7.4	7.6	5.6	4.5	108.7
Skilled and basic vocational qualifications	46.3	99.8	54.3	12.6	19.6	9.7	10.2	7.7	13.9	275.0
<i>Field of qualification obtained before migration —</i>										
Teaching, education	5.8	11.6	6.3	4.0	11.0	* 3.0	4.9	* 2.9	* 3.2	53.3
Business administration	14.5	30.2	17.1	* 3.4	17.6	10.6	7.9	8.2	11.0	123.0
Arts, humanities, social sciences	4.5	10.0	3.7	* 1.6	4.8	3.5	8.0	4.3	* 1.6	42.9
Economics, law	* 1.2	* 3.2	3.7	* 1.3	* 2.1	* 2.8	* 1.2	* 3.3	* 1.2	20.5
Mechanical, electrical, automotive and manufacturing trades	18.0	33.0	28.3	6.4	6.7	* 1.8	4.7	3.7	* 3.0	106.1
Building	8.8	18.3	9.9	* 2.4	* 0.6	* 0.2	* 1.5	* 0.5	* 2.3	44.3
Hairdressing, beauty	* 1.8	7.0	* 2.3	* 1.2	* 0.8	* 0.3	* 1.7	* 0.0	* 0.2	15.3
Food and hospitality	* 2.6	5.8	6.9	* 2.1	* 1.2	* 2.8	* 0.0	* 0.8	* 0.5	22.9
Health, medicine	11.3	24.2	8.2	* 0.9	7.8	5.3	5.4	4.0	* 2.6	70.8
Science	* 2.6	11.9	4.4	* 2.6	* 2.1	3.5	4.8	4.5	* 1.2	38.1
Engineering	5.1	19.5	14.2	* 1.7	4.9	5.5	* 3.1	4.3	* 3.0	62.0
Other(c)	5.6	7.1	* 3.2	* 1.5	* 2.4	* 0.8	* 1.4	* 1.3	* 0.8	24.6
<b>Total</b>	<b>81.8</b>	<b>181.7</b>	<b>108.1</b>	<b>29.0</b>	<b>62.1</b>	<b>40.3</b>	<b>44.7</b>	<b>38.0</b>	<b>30.5</b>	<b>623.8</b>

(a) Includes 7,600 persons who obtained their qualifications in Australia prior to migrating. (b) Includes post-graduate diplomas and higher degrees. (c) Includes 'Agriculture, horticulture', 'Architecture' and 'Transport and machinery operations'.

**TABLE 11. MIGRANTS WHO ARRIVED IN AUSTRALIA AFTER 1970 AGED 18 AND OVER WITH POST-SCHOOL QUALIFICATIONS: FIELD OF QUALIFICATION OBTAINED BEFORE MIGRATION AND WHETHER QUALIFICATION RECOGNISED IN AUSTRALIA, SEPTEMBER 1993**  
(\*000)

Field of qualification obtained before migration	Qualification recognised in Australia by -				Total(a)	Qualification not recognised in Australia	Total
	Licensing/ registration board	Union/ professional association	Employer	Other			
Teaching, education	7.6	5.8	11.4	* 2.2	27.5	25.8	53.3
Business, administration	4.7	10.4	38.4	5.3	61.4	61.6	123.0
Arts, humanities, social sciences	* 3.2	3.7	10.9	4.3	22.8	20.0	42.9
Economics, law	* 2.3	* 2.9	3.6	* 1.9	11.1	9.4	20.5
Mechanical, electrical, automotive and manufacturing trades	24.6	11.9	27.1	* 2.8	67.0	39.1	106.1
Building	13.5	6.2	11.1	* 0.7	31.5	12.9	44.3
Hairdressing, beauty	3.7	* 0.5	* 2.1	* 0.0	6.3	9.0	15.3
Food and hospitality	* 1.7	* 1.6	9.0	* 0.3	12.7	10.3	22.9
Health, medicine	28.8	10.1	4.3	* 2.3	46.5	24.3	70.8
Science	* 3.2	4.8	17.7	* 3.4	29.4	8.6	38.1
Agriculture, horticulture	* 0.7	* 1.0	* 3.0	* 0.4	5.1	5.4	10.6
Engineering	9.0	15.7	12.4	* 3.1	40.8	21.2	62.0
Architecture	* 1.9	* 0.5	* 1.5	* 0.1	4.3	* 1.1	5.4
Transport and machinery operations	* 1.7	* 1.2	* 1.6	* 0.8	5.3	* 3.3	8.7
<b>Total</b>	<b>106.3</b>	<b>76.2</b>	<b>154.2</b>	<b>27.4</b>	<b>371.8</b>	<b>252.1</b>	<b>623.8</b>

(a) Includes 7,600 persons who obtained their qualification in Australia prior to migrating.

TABLE 12. MIGRANTS WHO ARRIVED IN AUSTRALIA AFTER 1970 AGED 18 AND OVER WHO WERE BORN IN OTHER THAN MAIN ENGLISH SPEAKING COUNTRIES: BIRTHPLACE AND ENGLISH FLUENCY, SEPTEMBER 1993  
(\*000)

<i>Birthplace</i>	<i>Only English usually spoken at home</i>	<i>Language other than English usually spoken at home</i>				<i>Total</i>	<i>Total</i>
		<i>English spoken very well</i>	<i>English spoken well</i>	<i>English not spoken well</i>	<i>English not spoken</i>		
Oceania and Antarctica	11.1	14.6	5.9	* 1.4	* 0.1	22.1	33.2
Fiji	8.1	9.1	* 2.4	* 0.4	* 0.0	11.9	20.0
Europe and the former USSR	26.3	52.9	70.4	46.0	6.4	175.6	201.9
Germany	3.6	7.7	4.0	* 0.6	* 0.0	12.3	15.9
Poland	* 2.8	7.8	10.5	5.5	* 0.4	24.3	27.0
Former Yugoslav Republics	* 1.9	5.7	22.9	15.6	* 3.1	47.3	49.2
The Middle East and North Africa	3.8	18.5	31.8	22.7	5.6	78.6	82.4
Lebanon	* 0.0	6.9	13.2	12.0	* 2.4	34.6	34.6
Turkey	* 0.0	* 0.9	6.2	6.7	* 1.5	15.3	15.3
Southeast Asia	33.8	58.3	53.5	63.6	15.4	190.8	224.7
Indonesia	* 1.4	4.9	4.9	4.3	* 1.0	15.0	16.4
Malaysia	10.0	17.1	6.3	* 2.2	* 0.3	26.0	36.0
Philippines	12.2	24.6	10.6	* 3.2	* 0.0	38.5	50.7
Viet Nam	* 1.7	5.4	22.1	46.0	12.9	86.5	88.3
Northeast Asia	4.6	16.0	37.3	38.6	14.3	106.2	110.8
China	* 1.0	3.7	11.8	18.6	11.3	45.4	46.4
Hong Kong	* 1.9	8.7	17.4	6.9	* 0.8	33.9	35.7
Southern Asia	26.8	31.0	6.8	3.6	* 0.5	41.9	68.8
Sri Lanka	10.6	8.5	* 2.5	* 0.3	* 0.0	11.3	22.0
India	13.8	17.6	3.7	* 2.0	* 0.5	23.8	37.6
South America, Central America and the Caribbean	4.9	10.2	11.2	12.3	* 1.5	35.3	40.2
Chile	* 1.5	* 2.9	6.3	3.8	* 0.7	13.8	15.3
Africa	10.7	6.9	3.6	* 0.8	* 0.0	11.3	22.0
<b>Total</b>	<b>122.0</b>	<b>208.5</b>	<b>220.5</b>	<b>188.9</b>	<b>43.9</b>	<b>661.8</b>	<b>783.8</b>
Males	50.4	98.5	112.2	76.5	12.6	299.8	350.2
Females	71.6	110.0	108.3	112.4	31.3	362.0	433.6

TABLE 13. ALL POPULATIONS BY STATE AND TERRITORY OF USUAL RESIDENCE, SEPTEMBER 1993  
('000)

	New South Wales	Victoria	Queensland	South Australia	Western Australia	Tasmania	Northern Territory	Australian Capital Territory	Australia
<i>Population 1 :</i> All persons aged 15 and over (excluding institutionalised persons and boarding school pupils)	4,649.7	3,475.4	2,393.4	1,147.6	1,305.7	355.4	115.0	231.5	13,673.7
<i>Population 2 :</i> Migrants who arrived in Australia after 1970 aged 18 and over	473.7	323.0	180.1	80.4	168.4	10.8	14.2	17.4	1,268.1
<i>Population 3 :</i> Migrants who arrived in Australia after 1970 aged 18 and over with post-school qualifications	223.8	151.2	95.4	39.6	90.5	7.2	6.4	9.8	623.8
<i>Population 4 :</i> Migrants who arrived in Australia after 1970 aged 18 and over who were born in other than main English speaking countries	349.7	238.5	70.6	40.7	61.0	3.7	8.4	11.1	783.8

## EXPLANATORY NOTES

### Introduction

The monthly population survey (which is described in *The Labour Force, Australia* (6203.0)) comprises the monthly labour force survey and supplementary topics. This publication contains some results of a supplementary survey run in association with the September 1993 labour force survey conducted throughout Australia.

2. Of the respondents to the labour force survey, those who fell within the scope of the supplementary survey were asked additional questions. They were asked details of country of last residence, members of their family who travelled to Australia with them, family already in Australia, whether they had a job just before migrating, occupation at September 1993, their highest educational qualification before and after migrating to Australia, main source of income at September 1993 and their sponsorship classification.

### Scope

3. The scope of this supplementary survey was the same as that used for the labour force survey (described in full in *The Labour Force, Australia* (6203.0)) except that it was restricted to persons who were not born in Australia and who arrived in Australia after 1970 aged 18 or more and were allowed to stay permanently.

### Coverage

4. In the population survey, coverage rules are applied which aim to ensure that each person is associated with only one dwelling, and hence has only one chance of selection. See *The Labour Force, Australia* (6203.0) for more details.

### Definitions

5. Further definitions of labour force and demographic classifications appearing in this publication are given in *The Labour Force, Australia* (6203.0).

6. Unless otherwise stated, all characteristics referenced in this publication relate to the week before the interview (i.e. the reference week).

### Results of the survey

7. Due to differences in the method of estimation used in this supplementary survey and that used in the labour force survey, there are some small variations between estimates in this publication and those in the corresponding issue of *The Labour Force, Australia* (6203.0).

8. Results of similar surveys, the first conducted in March 1984, *Characteristics of Migrants Aged 18 Years and Over at Time of Arrival and Who Arrived After 1960, Australia, March 1984* (6250.0), and March 1987, *Labour Force Status and Other Characteristics of Migrants, Australia, March 1987* (6250.0) and September 1990, have been given in previous issues of this publication. It is proposed that this survey will be conducted next in November 1996.

### Comparability of series

9. It is impracticable to obtain information relating to labour force status over a long period, of time which is strictly comparable with that obtained in the monthly labour force survey for which the reference period is one week. The definitions used in determining the labour force status of persons in the monthly survey depend on a detailed set of questions asked about a person's labour force activity during the reference period. For the survey of labour force status and other characteristics of migrants a person is assigned to a labour force category before migration on the basis of a more limited set of questions. It is for this reason that 'Had a job' and 'Did not have a job' are used to describe pre-migration labour force status and the more rigidly defined employed and unemployed (as used in the monthly labour force survey) are used to describe labour force status at September 1993.

### Discontinuities in series

10. The educational attainment data item in this survey has been classified according to the Australian Bureau of Statistics Classification of Qualifications (ABSCQ). The major difference between data collected according to the ABSCQ and the previous classification used is that level of attainment and field of study in the ABSCQ are two distinct elements.

11. Persons who received a qualification from a course of study of less than one semester full-time duration are excluded from the new classification. However, in this survey the question on the duration the certificate took to complete was not asked and those persons are classified as having a qualification in this survey. In September 1993, 1.8 per cent of all students aged 15-24 years completed a full-time certificate course of less than one semester. For a more detailed explanation of the ABSCQ, see Information Paper, *Australian Bureau of Statistics Classification of Qualifications — ABSCQ* (1263.0).

12. From April 1991, labour force birthplace data are aggregated according to major groups of the *Australian Standard Classification of Countries for Social Statistics* (ASCCSS) (1269.0). The ASCSS was developed by the ABS for use whenever demographic, labour and social statistics are classified by countries.

13. The ASCSS major groups are based on the concept of geographic proximity. They differ from the country groups presented in publications prior to April 1991. For example, African countries are now covered by 'The Middle East and North Africa' and 'Africa (excluding North Africa)', while Asia has been split into 'Southeast Asia', 'Northeast Asia' and 'Southern Asia'. Data for selected individual countries will continue to be available. Historical estimates contained in this publication have been revised to enable comparisons of estimates from this survey with those from surveys conducted prior to September 1993.

### Estimation procedure

14. The estimates are derived from the population survey by use of a ratio estimation procedure, which ensures that the estimates conform to an independently estimated distribution of the population for each capital city and remainder of State by age, sex and labour force status, rather than to the corresponding distribution within the sample itself.

### Reliability of the estimates

15. Estimates in this publication are subject to sampling and non-sampling errors. For further information refer to the Technical Notes, page 19.

### Related publications

16. Other ABS publications which may be of interest include:

*The Labour Force, Australia* (6203.0) — issued monthly

*Labour Force Experience, Australia* (6206.0) — issued annually

*Labour Mobility, Australia* (6209.0) — issued two yearly

*Persons who have Left the Labour Force, Australia, April 1991* (6267.0) — issued irregularly

*Job Search Experience of Unemployed Persons, Australia July 1993* (6222.0) — issued annually

*Transition from Education to Work, Australia* (6227.0) — issued annually

*Successful and Unsuccessful Job Search Experience, Australia, July 1992* (6245.0) — issued two yearly

17. Current publications produced by the ABS are listed in the *Catalogue of Publications, Australia* (1101.0). The ABS also issues, on Tuesdays and Fridays, a *Publications Advice* (1105.0) which lists publications to be released in the next few days. The Catalogue and Publications Advice are available from any ABS office.

### Symbols and other usages

- \* subject to sampling variability too high for most practical uses. See the Technical Notes, page 19
- .. not applicable
- r revised

18. Because estimates have been rounded, discrepancies may occur between sums of the component items and totals.

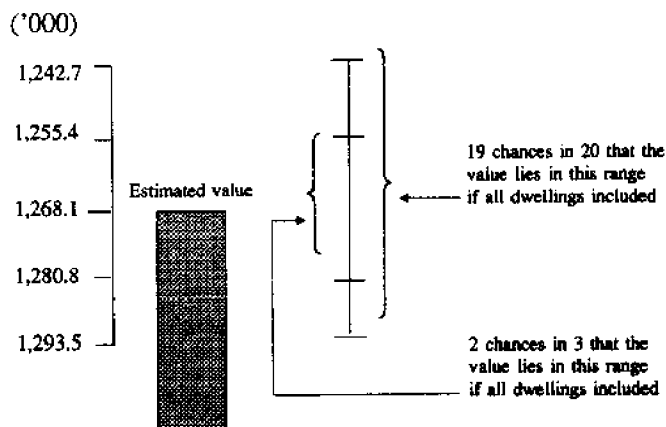


### TECHNICAL NOTE

Since the estimates in this publication are based on information obtained from occupants of a sample of dwellings, they are subject to sampling variability, that is, they may differ from those that would have been produced if all dwellings had been included in the survey. One measure of the likely difference is given by the *standard error*, which indicates the extent to which an estimate might have varied by chance because only a sample of dwellings was included. There are about two chances in three that a sample estimate will differ by less than one standard error from the number that would have been obtained if all dwellings had been included, and about nineteen chances in twenty that the difference will be less than two standard errors. Another measure of the likely difference is the *relative standard error*, which is obtained by expressing the standard error as a percentage of the estimate.

2. Space does not allow for the separate indication of the standard errors of all estimates in this publication. A table of standard errors for general application is given on the following page. Since they are averages based on calculations for a limited number of past surveys over a wide range of labour force characteristics these numbers will not give a precise measure of the standard error of a particular estimate but they will provide an indication of its magnitude.

3. An example of the calculation and the use of standard errors in relation to estimates of persons is as follows. Table 3 shows the estimated number of persons who arrived in Australia after 1970 aged 18 and over as 1,268,100. Since this estimate is between 1,000,000 and 2,000,000 the standard error for Australia will be between 11,800 and 15,200 in the standard error table and can be approximated as 12,700 (rounded to the nearest 100). Therefore, there are about two chances in three that the value that would have been produced if all dwellings had been included in the survey will fall in the range 1,255,400 to 1,280,800 and about nineteen chances in twenty that the value will fall within the range 1,242,700 to 1,293,500. This example is illustrated in the following diagram.



4. As can be seen from the standard error table, *the smaller the estimate the higher is the relative standard error*. Very small estimates are thus subject to such high standard errors (relative to the size of the estimate) as to detract seriously from their value for most reasonable uses. In the tables in this publication, only estimates with relative standard errors of 25 per cent or less and percentages based on such estimates are considered sufficiently reliable for most purposes. However, estimates and percentages with larger relative standard errors have been included and are preceded by an asterisk (e.g. \*3.4) to indicate they are subject to high standard errors and should be used with caution.

5. Proportions and percentages formed from the ratio of two estimates are also subject to sampling errors. The size of the error depends on the accuracy of both the numerator and the denominator. A formula to approximate the relative standard error (RSE) of a proportion is:

$$RSE (x/y) = \sqrt{[RSE (x)]^2 + [RSE (y)]^2}$$

6. Considering the example from paragraph 3 above, of the 1,268,100 persons who arrived in Australia after 1970 aged 18 and over, there were approximately 738,500 persons or 58.2 per cent whose country of last residence was other than main English speaking. The standard error of 738,500 is approximately 10,300 so the relative standard error is 1.4 per cent. The relative standard error for 1,268,100 is 1.0 per cent. Applying the above formula, the relative standard error of the proportion is  $\sqrt{(1.7)^2 + (0.8)^2}$  or 1.9 per cent, giving a standard error for the proportion (58.2 per cent) of 0.6 percentage points. Therefore, there are about two chances in three that the proportion of persons whose last country of residence was other than main English speaking is between 57.6 per cent and 58.8 per cent and nineteen chances in twenty the proportion was within the range 57.0 per cent to 59.4 per cent.

7. Published estimates may also be used to calculate the difference between two survey estimates (of numbers or percentages). Such an estimate is subject to sampling error. The sampling error of the difference between two estimates depends on their standard errors and the relationship (correlation) between them. An approximate standard error (SE) of the difference between two estimates ( $x-y$ ) may be calculated by the following formula:

$$SE (x-y) = \sqrt{[SE (x)]^2 + [SE (y)]^2}$$

While this formula will only be exact for differences between separate and uncorrelated characteristics or subpopulations it is expected to provide a good approximation for all differences likely to be of interest in this publication.

8. The imprecision due to sampling variability, which is measured by the standard error, should not be confused with inaccuracies that may occur because of imperfections in reporting by interviewers and respondents and errors made in coding and processing data. Inaccuracies of this kind are referred to as the *non-sampling error*, and they

may occur in any enumeration, whether it be a full count or a sample. Every effort is made to reduce the non-sampling error to a minimum by careful design of questionnaires, intensive training and supervision of interviewers and efficient operating procedures.

## STANDARD ERRORS OF ESTIMATES

Size of estimate (Persons)	N.S.W.	Vic.	Qld	S.A.	W.A.	Tas.	N.T.	A.C.T.	Australia	
	— number —									Relative standard error (per cent)
100			120			90	100	80	130	125.4
200		230	210	180	210	130	130	120	190	94.9
300	320	290	270	220	250	160	160	140	240	80.2
400	380	340	310	250	290	180	180	160	280	71.0
500	420	380	340	280	330	200	200	180	320	64.5
600	460	420	380	310	360	220	220	190	360	59.6
700	500	450	410	330	390	240	230	210	390	55.7
800	540	490	440	350	410	260	250	220	420	52.5
900	570	520	460	370	430	270	260	230	450	49.8
1,000	600	540	490	390	460	280	270	240	480	47.5
1,100	630	570	510	410	480	300	280	250	500	45.5
1,200	660	600	530	430	500	310	300	260	520	43.7
1,300	680	620	550	450	520	320	310	270	550	42.2
1,400	710	640	570	460	540	330	320	280	570	40.8
1,500	730	670	590	480	550	340	330	290	590	39.5
1,600	760	690	610	490	570	350	340	300	610	38.3
1,700	780	710	630	510	590	360	350	310	630	37.3
1,800	800	730	650	520	600	370	350	320	650	36.3
1,900	820	750	670	530	620	380	360	320	670	35.4
2,000	840	770	680	550	630	390	370	330	690	34.6
2,100	840	770	680	550	630	390	370	330	690	34.6
2,200	880	810	710	570	660	400	390	340	730	33.1
2,300	900	820	730	580	670	410	400	350	740	32.4
2,400	920	840	750	590	690	420	400	360	760	31.7
2,500	940	860	760	610	700	430	410	360	780	31.1
3,000	1,000	940	830	660	760	460	450	390	860	28.5
3,500	1,100	1,000	890	710	810	490	480	420	930	26.5
4,000	1,150	1,100	950	750	860	520	510	440	990	24.9
4,500	1,250	1,150	1,000	790	910	540	540	460	1,050	23.5
5,000	1,300	1,200	1,050	830	960	570	570	490	1,100	22.3
6,000	1,400	1,300	1,150	900	1,050	610	620	520	1,200	20.4
8,000	1,600	1,500	1,300	1,000	1,150	680	700	590	1,400	17.7
10,000	1,800	1,650	1,450	1,100	1,300	740	780	640	1,600	15.8
20,000	2,450	2,250	1,950	1,500	1,750	940	1,050	840	2,200	11.0
30,000	2,900	2,700	2,300	1,800	2,050	1,050	1,300	990	2,650	8.9
40,000	3,300	3,000	2,600	2,000	2,300	1,150	1,500	1,100	3,050	7.7
50,000	3,600	3,300	2,850	2,200	2,550	1,250	1,650	1,200	3,400	6.8
100,000	4,800	4,400	3,800	2,850	3,300	1,500	2,300	1,550	4,600	4.6
200,000	6,300	5,800	5,000	3,700	4,350	1,750	3,200	1,950	6,200	3.1
300,000	7,300	6,700	5,800	4,250	5,000	1,950		2,250	7,300	2.4
400,000	8,200	7,500	6,500	4,750	5,600	2,050			8,200	2.1
500,000	8,900	8,100	7,000	5,100	6,100	2,150			9,000	1.8
1,000,000	11,400	10,400	9,000	6,400	7,700				11,800	1.2
2,000,000	14,400	13,100	11,500	8,100	9,800				15,200	0.8
5,000,000	19,500	17,600	15,500						21,000	0.4
10,000,000	24,100								26,500	0.3
20,000,000									32,900	0.2

## GLOSSARY

*Applicant status:* principal applicants, partners of principal applicants or other applicants (dependents of principal applicants) status as registered on the migration application form.

*Birthplace:* From April 1991, classified according to the *Australian Standard Classification of Countries for Social Statistics (ASCCSS)* (1269.0).

*Country of last residence:* the country in which the person last lived; see *Birthplace* for country classification.

*Educational attainment:* measures the highest qualification obtained by the respondent, classified according to the *Australian Bureau of Statistics Classification of Qualifications (ABSCQ)*. The seven categories for level of attainment are —

*Higher degree:* Includes doctorates and masters degrees. The minimum entry requirements are usually a masters degree or first class honours for a doctorate and first class honours for a masters degree. The duration of study is a minimum of two to four years for a doctorate and two years full-time or equivalent for a masters degree.

*Postgraduate diploma:* Includes Graduate Certificates. The entry requirement is usually the successful completion of a bachelor degree or an undergraduate diploma. The duration of study ranges from six months (for a Graduate Certificate) to one year full-time study or equivalent.

*Bachelor degree:* The entry requirement is the satisfactory completion of Year 12 or its equivalent. The duration of study ranges from three to six years full-time study or its equivalent.

*Undergraduate diploma:* The entry requirement is usually the successful completion of Year 12 or its equivalent. The duration of study is three years full-time study or its equivalent. Certain other qualifications are classified to this level on the basis that their entry requirements, duration of study and theoretical orientation are regarded as being equivalent to those of undergraduate diplomas, for example, Certificate in Psychiatric Nursing.

*Associate diploma:* The entry requirement is usually the completion of Year 12 or the completion of Year 10 and a pre-requisite certificate course. The duration of study ranges from one to two years full-time study or its equivalent. Advanced Certificates, Technician Certificates and Certificates of Technology are included in this level as they have broadly the same theoretical orientation as associate diplomas.

*Skilled Vocational Qualifications:* The entry requirement is usually the completion of Year 10

or its equivalent. In addition, some courses may require a student to be concurrently employed in that specific field. The duration of study is two to four years, and typically involve some on-the-job training.

*Basic Vocational Qualifications:* Often require Year 10 completion, however many courses have no formal entry requirements. The duration of study ranges from one semester to one year of full-time study or equivalent.

*Employed:* persons aged 15 and over who, during the reference week:

- (a) worked for one hour or more for pay, profit, commission or payment in kind in a job or business, or on a farm (comprising employees, employers and self-employed persons); or
- (b) worked for one hour or more without pay in a family business or on a farm (i.e. unpaid family helpers); or
- (c) were employees who had a job but were: on paid leave; on leave without pay for less than four weeks up to the end of the reference week; stood down without pay because of bad weather or plant breakdown at their place of employment for less than four weeks up to the end of the reference week; on strike or locked out; on workers' compensation and expected to be returning to their job; or receiving wages or salary while undertaking full-time study; or
- (d) were employers, self-employed persons or unpaid family helpers who had a job, business or farm, but were not at work.

*English fluency:* the subjective response given by a respondent to the question "How well would you say you speak English?"

*Family:* is defined to consist of two or more related persons usually resident in the same household at the time of the survey. A family comprises a married couple or a family head together with any persons having any of the following relationship to them:

- (a) sons or daughters of any age, if not married and with no children of their own at present; or
- (b) other relatives if not accompanied by a spouse, sons or daughters, or parents of their own; or
- (c) any children under 15 years of age who do not have a parent present.

*Field of qualification before migration:* respondents with a degree, trade qualification; or a certificate or diploma (as defined) indicated the main field of qualification for their highest qualification before migrating.

*Government pension or cash benefit* comprises:

- (a) Age/Disability Support/Sole Parent's/Widow's Pension; or
- (b) Jobsearch/Newstart/Sickness Allowance/Special Benefit; or
- (c) Family Allowance/AUSTUDY/Other Australian Government Pension or Benefit.

*Labour force:* for any group, persons who were employed or unemployed, as defined.

*Main English speaking countries:* comprises the United Kingdom, Ireland, Canada, South Africa, U.S.A. and New Zealand.

*Migrant:* is a person who was not born in Australia and who was a permanent resident of Australia at the time of the survey. The main focus of this publication is that group of the migrant population who arrived after 1970 aged 18 and over on arrival and had obtained permanent residency status.

*Migration category:* classifies migrants according to whether they were born in or a citizen of New Zealand, the principal applicant or a partner of a principal applicant. Principal applicants and partners of principal applicants are further classified by whether they were refugees, sponsored or unsponsored.

*Not in the labour force:* persons who were not in the categories employed or unemployed as defined.

*Occupation:* Unless otherwise specified, all occurrences of occupation in this publication refer to Major Group as defined by the *Australian Standard Classification of Occupation (ASCO) 1986*.

*Principal applicant:* the family member who is considered to have the best chance of being accepted to migrate and about whom the eligibility to migrate is determined.

*Recognition of qualifications:* interviewees were asked whether their overseas qualification was recognised in Australia. This recognition of the qualification means that it had been given official acknowledgement, such as having been accredited by a relevant authority such as a Licensing/Registration Board, Union/Professional Association or Employer or recognised by the persons employer or other person or organisation.

*Refugee:* all persons for whom 'yes' was the response to the question "when you came to Australia to live, did you come as a refugee"? A refugee as defined by the Department of Immigration is a person outside the country of their nationality who is in fear of being persecuted or at risk of serious harm for their civil or political status in that country and their own government cannot or will not protect them.

*Sponsored:* Migrants who were sponsored include those who had family already in Australia who sponsored them under the Family Reunion criteria, and those who were sponsored by an employer, or some other person or organisation (other than the Australian Government). Sponsorship is a commitment, signed on a government form by a permanent resident, Australian citizen or organisation, to assist an applicant after arrival in Australia.

*Unemployed:* Persons aged 15 and over who were not employed during the reference week, and:

- (a) had actively looked for full-time or part-time work at any time in the four weeks up to the end of reference week and:
  - (i) were available for work in the reference week, or would have been available except for temporary illness (i.e. lasting for less than four weeks to the end of the reference week); or
  - (ii) were waiting to start a new job within four weeks from the end of the reference week and would have started in the reference week if the job had been available then; or
- (b) were waiting to be called back to a full-time or part-time job from which they had been stood down without pay for less than four weeks up to the end of the reference week (including the whole of the reference week) for reasons other than bad weather or plant breakdown.

*Un-sponsored:* Migrants who were unsponsored include those who came to Australia under special eligibility criteria.

## SPECIAL DATA SERVICES

## DATA ITEMS AND HOW TO ORDER SPECIAL TABLES FROM THIS SURVEY

The ABS offers a range of unpublished data from this survey upon request. When ordering special tables from this survey, please ensure you identify the population(s) and the data item(s) which you require.

This section specifies the data items, categories and populations which relate to the survey and includes an order form for special tables. More detailed breakdowns of some data items are available on request.

The population(s) for a particular data item refers to the persons in the survey to whom the data item relates.

Refer to the glossaries in this publication and in *The Labour Force, Australia* (6203.0) for definitions of data items.

## POPULATIONS

POPULATION 1: Persons aged 15 and over (excluding institutionalised and boarding school pupils)

POPULATION 2: Migrants who arrived in Australia after 1970 aged 18 and over

POPULATION 3: Migrants who arrived in Australia after 1970 aged 18 and over with post-school qualifications

POPULATION 4: Migrants who arrived in Australia after 1970 aged 18 and over who were born in other than main English speaking countries

DATA ITEM	POPULATIONS	DATA ITEM	POPULATIONS
<b>1 STATE</b>	<b>ALL</b>	<b>6A FAMILY STATUS (1)</b>	<b>ALL</b>
New South Wales		Member of a family	
Victoria		Husband or wife	
Queensland		With dependants present	
South Australia		Without dependants present	
Western Australia		Sole parent	
Tasmania		Other family head without dependants present	
Northern Territory		Full-time student aged 15-24(a)	
Australian Capital Territory		Other child(b) of married couple or family head	
		Other relative of married couple or family head	
<b>2 AREA OF USUAL RESIDENCE</b>	<b>ALL</b>	Not a member of a family	
Metropolitan		Living alone	
Non-metropolitan		Not living alone	
<b>3 REGION OF USUAL RESIDENCE</b>	<b>ALL</b>	Family status not determined	
Standard labour force dissemination regions			
<b>4 SEX</b>	<b>ALL</b>	(a) Excludes persons aged 20-24 attending school.	
Males		(b) Aged 15 and over.	
Females		<b>6B FAMILY STATUS (2)</b>	<b>ALL</b>
<b>5 MARITAL STATUS</b>	<b>ALL</b>	Member of a family	
Married		Husband or wife	
Not-married		With children aged 0-14 present	
		Without children aged 0-14 present	
		Sole parent	
		With children aged 0-14 present	
		Without children aged 0-14 present	
		Other family head	
		Full-time student aged 15-24(a)	
		Other child(b) of married couple or family head	
		Other relative of married couple or family head	
		Not a member of a family	
		Living alone	
		Not living alone	
		Family status not determined	
		(a) Excludes persons aged 20-24 attending school.	
		(b) Aged 15 and over.	

DATA ITEM	POPULATIONS	DATA ITEM	POPULATIONS
<b>7A BIRTHPLACE(1)</b>	<b>2</b>	<b>12 OCCUPATION JUST BEFORE MIGRATION</b>	<b>2,4</b>
Oceania and Antarctica		Had a job just before migration	
New Zealand		Managers and administrators	
Fiji		Professionals	
Europe and the former USSR		Para-professionals	
Germany		Tradespersons	
Poland		Clerks	
United Kingdom and Ireland		Salespersons and personal service workers	
Former Yugoslav Republics		Plant and machine operators, and drivers	
The Middle East and North Africa		Labourers and related workers	
Lebanon		Did not have a job just before migration	
Turkey		<b>13 WHETHER HAD FAMILY IN AUSTRALIA</b>	<b>2,4</b>
Southeast Asia		<b>JUST BEFORE MIGRATION</b>	
Indonesia		Had family in Australia before migration	
Malaysia		Children only	
Philippines		Spouse/partner only	
Viet Nam		Children and spouse/partner only	
Northeast Asia		Children and other family only	
China		Spouse/partner and other family only	
Hong Kong		Children, spouse/partner and other family only	
Southern Asia		Brothers/sisters(in-law) only	
Sri Lanka		Parents(in-law) only	
India		Other family only	
Northern America		Did not have family in Australia before migration	
United States of America		<b>14 ALL FAMILY IN AUSTRALIA JUST BEFORE</b>	<b>2,4</b>
South America, Central America and the Caribbean		<b>MIGRATION</b>	
Chile		None	
Africa		Children only	
		Spouse/partner	
Note: Data available at individual country levels		Brothers/sisters(in-law)	
according to the ASCCSS.		Parents(in-law)	
		Fiance/fiancee	
<b>7B YEAR OF ARRIVAL</b>	<b>2</b>	Uncle/aunt	
(single years collected)		Other family member	
Arrived 1971 — 1975		<b>15 MIGRATION CATEGORY</b>	<b>2</b>
Arrived 1976 — 1980		New Zealand(a)	
Arrived 1981 — 1985		Principal applicant	
Arrived 1986 — 1990		Refugee	
Arrived 1991 to survey date		Sponsored	
		By family	
<b>8 AGE</b>	<b>ALL</b>	By other person	
18 — 24		By employer	
25 — 34		By other organisation	
35 — 44		Did not know	
45 — 54		Un-sponsored	
55 — 59		Partner of principal applicant	
60 — 64		Refugee	
65 years and over		Sponsored	
<b>9 MIGRANT SUMMARY VARIABLE</b>	<b>1</b>	By family	
Born in Australia		By employer	
Born outside Australia		By other organisation	
Aged 15-17 at September 1993		Did not know	
Aged less than 18 on arrival		Un-sponsored	
Arrived in or before 1970		Status could not be determined	
Arrived after 1970		Other	
Temporary resident		No application form completed	
Permanent resident		Don't know	
<b>10 WHETHER HAD A JOB JUST BEFORE</b>	<b>2,4</b>		
<b>MIGRATION</b>			
Had a job just before migration			
Did not have a job just before migration			
<b>11 WHETHER WORKED FULL-TIME JUST</b>	<b>2,4</b>		
<b>BEFORE MIGRATION</b>			
Had a job just before migration			
Worked full-time			
Did not work full-time			
Did not have a job just before migration			

(a) Includes persons born in New Zealand and those who were a citizen of New Zealand before migrating to Australia.

DATA ITEM	POPULATIONS
<b>16 FAMILY WHO ARRIVED WITH MIGRANT</b>	<b>2</b>
Had family arriving with migrant	
Children only	
Spouse/partner only	
Children and spouse/partner only	
Children and other family only	
Spouse/partner and other family only	
Children, spouse/partner and other family only	
Other family only	
Did not have family arriving with migrant	
<b>17 ALL FAMILY WHO ARRIVED WITH MIGRANT</b>	<b>2</b>
None	
Children	
Spouse/partner	
Brothers/sisters(in-law)	
Parents(in-law)	
Fiance/fiancee	
Uncle/aunt	
Other	
<b>18 AGE ON ARRIVAL</b>	<b>2</b>
18 — 24	
25 — 34	
35 — 44	
45 — 54	
55 — 59	
60 — 64	
65 and over	
<b>19 ENGLISH FLUENCY</b>	<b>4</b>
Only English usually spoken at home	
Language other than English spoken at home	
English spoken —	
Very well	
Well	
Not well	
Not at all	
<b>20A COUNTRY OF LAST RESIDENCE (1)</b>	<b>2</b>
Oceania	
New Zealand	
Other countries	
Europe and the former USSR	
United Kingdom and Ireland	
Other countries	
The Middle East and North Africa	
Southeast Asia	
Northeast Asia	
Southern Asia	
The Americas	
Africa	
Note: Data available at individual country levels according to the ASCCSS.	
<b>20B COUNTRY OF LAST RESIDENCE (2)</b>	<b>2</b>
Main English speaking countries	
Other than main English speaking countries	
<b>21 RELATIONSHIP OF COUNTRY OF LAST RESIDENCE TO COUNTRY OF BIRTH</b>	<b>2</b>
Country of last residence	
Different to country of birth	
Same as country of birth	

DATA ITEM	POPULATIONS
<b>22 EDUCATIONAL ATTAINMENT ON ARRIVAL</b>	<b>2</b>
With post-school qualifications on arrival	
Bachelor degree or higher	
Undergraduate diploma	
Associate diploma	
Skilled and basic vocational qualifications	
Without post-school qualifications on arrival	
Age left school —	
18 and over	
16 and 17	
14 and 15	
Under 14	
Age left school not asked	
Never attended school	
<b>23 FIELD OF QUALIFICATION OBTAINED BEFORE MIGRATION</b>	<b>3</b>
Teaching, education	
Business, administration	
Arts, humanities, social sciences	
Economics, law	
Mechanical, electrical, automotive and manufacturing trades	
Building	
Hairdressing, beauty	
Food and hospitality	
Health, medicine	
Science	
Agriculture, horticulture	
Engineering	
Transport and machinery operations	
<b>24 COUNTRY IN WHICH QUALIFICATION WAS OBTAINED BEFORE MIGRATION</b>	<b>3</b>
Oceania	
Europe and the former USSR	
United Kingdom and Ireland	
Other countries	
The Middle East and North Africa	
Southeast Asia	
Northeast Asia	
Southern Asia	
The Americas	
Africa	
Note: Data available at individual country levels according to the ASCCSS.	
<b>25 WHETHER QUALIFICATION OBTAINED BEFORE MIGRATION RECOGNISED IN AUSTRALIA</b>	<b>3</b>
Qualifications recognised by —	
Licensing/registration board	
Union/professional association	
Employer	
Other	
Qualifications not recognised in Australia	
Qualifications obtained in Australia before migration	
<b>26 HIGHEST QUALIFICATION GAINED SINCE ARRIVAL</b>	<b>2</b>
Had gained post-school qualifications since arrival	
Bachelor degree or higher	
Undergraduate diploma	
Associate diploma	
Skilled and basic vocational qualifications	
Had not gained post-school qualifications since arrival	

DATA ITEM	POPULATIONS	DATA ITEM	POPULATIONS
<b>27 LABOUR FORCE STATUS AND FULL-TIME OR PART-TIME STATUS AT SEPTEMBER 1993</b>	<b>ALL</b>	<b>30 MAIN SOURCE OF INCOME AT SEPTEMBER 1993</b>	<b>2,4</b>
In the labour force		Wage or salary	
Employed		Government pension or cash benefit	
Full-time		Own business or share in partnership	
Part-time		Nil/spouse's income	
Unemployed		Superannuation	
Looking for full-time work		Investment/interest	
Looking for part-time work		Other	
Not in the labour force		<b>31 MAIN SOURCE OF INCOME AND GOVERNMENT PENSIONS/BENEFITS AT SEPTEMBER 1993</b>	<b>2,4</b>
<b>28 LABOUR FORCE STATUS AND STATUS OF WORKER AT SEPTEMBER 1993</b>	<b>ALL</b>	Wages or salary	
In the labour force		Government pension or cash benefit	
Employed		Age/disability support/sole parent's/widow's pension	
Employers		Job search/newstart/sickness allowance/special benefit	
Self-employed		Family allowance/AUSTUDY/other Australian government pension or benefit	
Wage and salary earners		Overseas pension or benefit	
Unpaid family helpers		Own business or share in partnership	
Unemployed		Nil/spouse's income	
Not in the labour force		Superannuation	
<b>29 OCCUPATION OF MIGRANTS AT SEPTEMBER 1993</b>	<b>2,4</b>	Investment/interest	
Employed		Other	
Managers and administrators		<b>32 WHETHER OCCUPATION BEFORE MIGRATION IS THE SAME AS OCCUPATION AT SEPTEMBER 1993</b>	<b>2,4</b>
Professionals		Had a job just before migration	
Para-professionals		Employed at September 1993	
Tradespersons		Same occupation major group	
Clerks		Changed occupation major group	
Salespersons and personal service workers		Unemployed at September 1993	
Plant and machine operators and drivers		Not in the labour force at September 1993	
Labourers and related workers		Did not have a job just before migration	
Unemployed			
Not in the labour force			



## SUPPLEMENTARY AND SPECIAL SURVEYS

The supplementary and special surveys collect data on particular aspects of the labour force. It may be possible to order Unit Record Tapes on the following supplementary and special surveys by contacting the ABS (see below for contact numbers).

<i>Title of Publication</i>	<i>Catalogue No.</i>
Alternative Working Arrangements, Australia, March to May 1982, September to November 1986	6341.0
Annual and Long Service Leave Taken, Australia, May 1988 to April 1989	6317.0
Career Experience, Australia. Three-yearly. First issue February 1993	6254.0
Career Paths of Persons with Trade Qualifications, Australia, 1989	6243.0
Career Paths of Qualified Nurses, Australia, 1989	6277.0
Child Care, Australia, May 1969, 1973, 1977; June 1980; November 1984; June 1987; November 1990	4402.0
Employment Benefits, Australia. Two-yearly. Latest issue August 1992	6334.0
How Workers Get Their Training, Australia, 1989	6278.0
Income Distribution Survey, Australia, Persons with Earned Income, 1986, 1990	6546.0
Job Search Experience of Unemployed Persons, Australia. Annually. Latest issue July 1993	6222.0
Labour Force Experience, Australia. Annually. Latest issue March 1993	6206.0
Labour Force Status and Educational Attainment, Australia. Annually. Latest issue February 1993	6235.0
Labour Force Status and Other Characteristics of Families, Australia. Annually. Latest issue June 1992	6224.0
Labour Force Status and Other Characteristics of Migrants, Australia, September 1993	6250.0
Labour Mobility, Australia. Two yearly. Latest issue February 1992	6209.0
Multiple Jobholding, Australia. Four-yearly. Latest issue July 1991	6216.0
Participation in Education, Australia. (Formerly Labour Force Status and Educational Attendance). Annually. Latest issue September 1993	6272.0
Persons Employed at Home, Australia, April 1989, March 1992	6275.0
Persons Not in the Labour Force, Australia. Annually. Latest issue September 1993	6220.0
Persons Who Had Re-entered the Labour Force, Australia, May 1985, May 1987, May 1990, May 1993	6264.0
Persons Who Have Left the Labour Force, Australia, November 1985, April 1988, April 1991	6267.0
Retirement and Retirement Intentions, Australia, November 1986, November 1989, October 1992	6238.0
Successful and Unsuccessful Job Search Experience, Australia. Two-yearly. Latest issue July 1992	6245.0
Superannuation, Australia, February 1974, September to November 1982, November 1988, 1991 and 1993	6319.0
Trade Union Members, Australia. Two-yearly. Latest issue August 1992	6325.0
Transition From Education to Work, Australia. Annually. Latest issue May 1993	6227.0
Underemployed Workers, Australia, May 1988, May 1991	6265.0
Weekly Earnings of Employees (Distribution), Australia. Annually. Latest issue August 1993	6310.0

### LABOUR FORCE INQUIRIES



SYDNEY	(02) 268 4212	ADELAIDE	(08) 237 7438
MELBOURNE	(03) 615 7677	HOBART	(002) 20 5840
BRISBANE	(07) 222 6337	DARWIN	(089) 43 2150
PERTH	(09) 323 5380	CANBERRA	(06) 252 6525

## SPECIAL DATA REQUESTS

### LABOUR FORCE STATUS AND OTHER CHARACTERISTICS OF MIGRANTS, SEPTEMBER 1993

Please specify your special data request(s) on a photocopy of the order form provided on the following page.

The following points should be noted when requesting special tables:

1. Table requests will be available on computer printout, floppy disk or microfiche.
2. The current cost of special tables is as follows —

No. of variables (excluding populations)	Cost per table (\$)
2	120
3	150
4	225
5	330
6 or more	negotiable

*NOTE:* Prices quoted are subject to revisions.

3. Return the completed **SPECIAL DATA REQUEST ORDER FORM** to —

Assistant Director  
Labour Force Supplementary Surveys  
Australian Bureau of Statistics  
PO Box 10  
Belconnen ACT 2616

*or*

Facsimile No. (06) 252 7784

4. The invoiced cost is payable in full within 28 days of receipt of data.
5. Any inquiries about this order should be directed to Mr Michael Jones (06) 252 6503.

**SPECIAL DATA REQUESTS ORDER FORM**

**LABOUR FORCE STATUS AND OTHER CHARACTERISTICS OF MIGRANTS,  
SEPTEMBER 1993**

TABLE NO.	DATA ITEM NO.	TABLE POPULATION	COST (\$)
Example: 1.	V4 (Sex) X		
	V5 (Migration category) X		
	V7B (Year of arrival — single years)	2	150

**ADDRESS ADVICE** — Please forward this order and invoice to :

**NAME** \_\_\_\_\_

**ORGANISATION** \_\_\_\_\_

**ADDRESS** \_\_\_\_\_

\_\_\_\_\_ **POSTCODE** \_\_\_\_\_

**FACSIMILE NO.** \_\_\_\_\_ **TELEPHONE** \_\_\_\_\_

**Signature** \_\_\_\_\_

**Date** / /





## *For more information ...*

The ABS publishes a wide range of statistics and other information on Australia's economic and social conditions. Details of what is available in various publications and other products can be found in the *ABS Catalogue of Publications and Products* available at all ABS Offices (see below for contact details).

### **Information Consultancy Service**

Information tailored to special needs of clients can be obtained from the Information Consultancy Service available at ABS Offices (see Information Inquiries below for contact details).

### **National *Dial-a-Statistic* Line**

0055 86 400

(Steadycom P/L: premium rate 25c/21.4 secs.)

This number gives 24-hour access, 365 days a year for a range of statistics.

### **Electronic Data Services**

Selections of most frequently requested statistics are available, updated daily, on DISCOVERY (Key \*656#). For more details on electronic data services available, contact Information Services in any of the ABS Offices (see Information Inquiries below for contact details).

### **Bookshops and Subscriptions**

There are over 400 titles of various publications available from ABS bookshops in all ABS Offices (see below Bookshop Sales for contact details). The ABS also provides a subscription service through which nominated publications are provided by mail on a regular basis at no additional cost (telephone Publications Subscription Service toll free on 008 02 0608 Australia wide).

## *Sales and Inquiries*

<b>Regional Offices</b>	<b>Information Inquiries</b>	<b>Bookshop Sales</b>
SYDNEY (02)	268 4611	268 4620
MELBOURNE (03)	615 7000	615 7829
BRISBANE (07)	222 6351	222 6350
PERTH (09)	323 5140	323 5307
ADELAIDE (08)	237 7100	237 7582
HOBART (002)	20 5800	20 5800
CANBERRA (06)	207 0326	207 0326
DARWIN (089)	43 2111	43 2111
<b>National Office</b>		
ACT (06)	252 6007	008 020 608

### **ABS Email Addresses**

Keylink	STAT.INFO/ABS
X.400	(C:AU,A:TELMEMO,O:ABS,SN:INFO,FN:STAT)
Internet	STAT.INFO@ABS. TELEMEMO.AU



Information Services, ABS, PO Box 10, Belconnen ACT 2616



## *For more information ...*

The ABS publishes a wide range of statistics and other information on Australia's economic and social conditions. Details of what is available in various publications and other products can be found in the *ABS Catalogue of Publications and Products* available at all ABS Offices (see below for contact details).

### **Information Consultancy Service**

Information tailored to special needs of clients can be obtained from the Information Consultancy Service available at ABS Offices (see Information Inquiries below for contact details).

### **National *Dial-a-Statistic* Line**

0055 86 400

(Steadycom P/L: premium rate 25c/21.4 secs.)

This number gives 24-hour access, 365 days a year for a range of statistics.

### **Electronic Data Services**

Selections of most frequently requested statistics are available, updated daily, on DISCOVERY (Key \*656#). For more details on electronic data services available, contact Information Services in any of the ABS Offices (see Information Inquiries below for contact details).

### **Bookshops and Subscriptions**

There are over 400 titles of various publications available from ABS bookshops in all ABS Offices (see below Bookshop Sales for contact details). The ABS also provides a subscription service through which nominated publications are provided by mail on a regular basis at no additional cost (telephone Publications Subscription Service toll free on 008 02 0608 Australia wide).

## *Sales and Inquiries*

<b>Regional Offices</b>	<b>Information Inquiries</b>	<b>Bookshop Sales</b>
SYDNEY (02)	268 4611	268 4620
MELBOURNE (03)	615 7000	615 7829
BRISBANE (07)	222 6351	222 6350
PERTH (09)	323 5140	323 5307
ADELAIDE (08)	237 7100	237 7582
HOBART (002)	20 5800	20 5800
CANBERRA (06)	207 0326	207 0326
DARWIN (089)	43 2111	43 2111
<b>National Office</b>		
ACT (06)	252 6007	008 020 608

### **ABS Email Addresses**

Keylink	STAT.INFO/ABS
X.400	(C:AU,A:TELMEMO,O:ABS,SN:INFO,FN:STAT)
Internet	STAT.INFO@ABS. TELEMEMO.AU



Information Services, ABS, PO Box 10, Belconnen ACT 2616



**Recommended retail price: \$13.00**



**262500009938**  
ISBN 0 642 18389 9